

New Headway

English Course

PET Practice Tests

New Headway English Course is a development of the highly successful multi-level Headway original coursebooks. The original coursebooks have been rewritten to include new features, activities, and above all, new material to make the learning of English stimulating and motivating for both adult and young adult learners. The course combines the best of traditional methods with more recent approaches to help students use English accurately and fluently and provides a fully comprehensive language teaching series from beginner to advanced.

New Headway English Course is a development of the highly successful multi-level Headway series. The original coursebooks have been rewritten to include new features, activities, and above all, new material to make the learning of English stimulating and motivating for both adult and young adult learners. The course combines the best of traditional methods with more recent approaches to help students use English accurately and fluently and provides a fully comprehensive language teaching series from beginner to advanced.

Jenny Quintana

OXFORD



Contents

Introduction	4
An overview of the Preliminary English Test (PET)	4
Exam tips for PET	6
Test 1	
Reading	10
Writing	19
Listening	22
Speaking	27
Test 2	
Reading	30
Writing	39
Listening	42
Speaking	47
Test 3	
Reading	50
Writing	59
Listening	62
Speaking	67
Test 4	
Reading	70
Writing	79
Listening	82
Speaking	87
Answer sheets	90

Introduction

This book contains four complete practice tests for the PET (the Cambridge Preliminary English Test) and is designed to be used alongside *New Headway Pre-Intermediate* and/or *New Headway Intermediate* to help familiarize students with the format of the PET examination.

The PET tests competence in Reading, Writing, Listening and Speaking. All the specifications for PET relate to the Council of Europe Threshold (1990) document (Level B1 of the Common European Framework) which corresponds to ALTE Level 2: Threshold (Lower Intermediate).

An overview of the Preliminary English Test (PET)

There are three Papers in PET which include four components: Reading, Writing, Listening and Speaking. Each component carries 25% of the final marks.

Paper 1: Reading and Writing (1 hour 30 mins)

Component	No. of Parts	Total Mark for Component
Reading	5	35 weighted to 25
Writing	3	25

Reading

PART 1 – SIGNS

five multiple-choice questions (four options)

Test focus: understanding of real-world notices

PART 2 – SHORT TEXTS

five descriptions matched to eight short texts

Test focus: detailed comprehension of factual materials; skimming and scanning skills

PART 3 – LONGER FACTUAL TEXT

ten true / false statements about a text containing factual information

Test focus: ability to scan for information

PART 4 – LONGER CONTINUOUS TEXT

five multiple-choice questions about a text which conveys opinion or attitude

Test focus: understanding of global meaning; ability to recognize opinion or attitude

PART 5 – CLOZE TEXT

ten gaps in a short text, to be completed by choosing one of four multiple-choice options

Test focus: knowledge of grammar and vocabulary; ability to recognize simple text markers

Writing

PART 1 – TRANSFORMATIONS

five sentences covering a range of grammatical structures

Test focus: accuracy of grammatical structures

PART 2 – FORM-COMPLETION

ten gaps to be filled in on a realistic form

Test focus: ability to write short responses within an authentic task

PART 3 – CONTINUOUS WRITING

an informal letter of about 100 words

Test focus: ability to achieve a given task; linguistic competence and control of errors

Paper 2: Listening (30 mins)

Component	No. of Parts	Total Mark for Component
Listening	4	25

PART 1 – SHORT EXTRACTS

seven short recordings which each relate to one of four illustrations, preceded by a short focus question

Test focus: understanding meaning, across a range of topics and with a variety of monologue and conversation types

PART 2 – LONGER FACTUAL MONOLOGUE

six multiple-choice questions with four options

Test focus: identifying specific information of a factual nature and writing it down

PART 3 – LONGER FACTUAL MONOLOGUE

completing a set of notes or a table by filling six gaps with a word or short phrase

Test focus: identifying specific information of a factual nature and writing it down

PART 4 – INFORMAL CONVERSATION

six true / false questions

Test focus: understanding both global and specific meaning; identifying attitudes and feelings

Paper 3: Speaking (10–12 mins)

Component	No. of Parts	Total Mark for Component
Speaking	4	30 weighted to 25

PART 1 – PERSONAL INFORMATION

introductory question and answer session and brief conversation between candidates

PART 2 – SIMULATED SITUATION

simulated situation with shared visual material

PART 3 – RESPONDING TO PHOTOGRAPHS

individual long turn, talking about a photo

PART 4 – DISCUSSION

paired discussion on the topic area illustrated in Part 3

Materials a Threshold User can deal with

At this level, learners should be able to cope with a range of language for general everyday situations which require a largely predictable range of language.

The text types which can be handled by the learner at this level include street signs and public notices, product packaging, forms, posters, brochures, city guides and instructions on how to do things, as well as informal letters, and newspaper and magazine texts such as articles, features and weather forecasts. The kinds of listening texts the learner needs to understand are announcements made at railway stations and airports, traffic information given on the radio, public announcements made at sporting events or pop concerts, and instructions given by police or customs officials. At Threshold Level, candidates need to be able to not only pick out facts, but also to understand opinions, attitudes, moods and wishes.

What a Threshold User can do

Learners at this level, if travelling as tourists, can get all the information needed from a tourist information centre, as long as it is of a straightforward, non-specialized nature. Similarly, if taking part in a guided tour, they can understand the main points of a commentary and ask questions in order to get more information, as long as no specialized technical language is needed. They can deal with most situations likely to arise when making travel arrangements through a travel agent or when actually travelling. In the context of work they can state requirements within their own job area, and ask questions of a fact-finding nature. In a meeting, they can take part in a discussion which involves the exchange of factual information or receiving instructions, but they may have difficulty dealing with anything unpredictable or unfamiliar. Where telephone calls are concerned, predictability is also important at this level, and as long as only routine matters are involved, the learner can receive and pass on messages. They can write simple personal letters such as 'thank-you' letters, but only within a more or less standard format.

Marking and Grading

PET is usually available six times a year on fixed dates in March, May, June (twice), November and December.

You are examined in pairs by two examiners in the speaking paper. One of the examiners is the interlocutor. This is the person who will ask the questions and direct what you say. The other is the examiner and he/she does not take part in the conversation. If there is an uneven number of candidates in total, the final students may be tested in a group of three.

The final mark a candidate receives in PET is an aggregate of the marks obtained in each of the three Papers (Reading and Writing, Listening, Speaking). There is no minimum pass mark for individual Papers.

PET has two passing grades:

Pass with Merit

Pass

And two failing grades:

Narrow Fail

Fail

'Pass' ordinarily corresponds to approximately 70% of the total marks, and 'Pass with Merit' to approximately 85%. A 'Narrow Fail' result indicates that a candidate was within 5% of the 'Pass' boundary.

Answer sheets

Candidates write or mark their answers on special answer sheets, OMRs (Optical Mark Readers) for Paper 1 (Reading and Writing) and Paper 2 (Listening). In the Reading and Writing test paper, although candidates can write their answers on the question paper, they must be transferred to the OMR sheet within the time allowed. At the end of the Listening Test, extra time is allowed for candidates to transfer their answers onto the OMR sheets. See pages 90 – 93 for examples of these answer sheets.

Further information about PET can be obtained from:

EFL Information

UCLES

1 Hills Road

Cambridge

CB1 2EU

UK

Tel: (0) 1223 553997

E-mail: eflhelpdesk@ucles.org.uk

Exam tips for PET

These tips are repeated on the first test to remind you of how best to approach each Part.

Paper 1: Reading and Writing (1 hour 30 mins)

Reading

Part 1 Signs	Exam tip
In this Part, you will be asked to answer five multiple-choice questions based on public notices, signs or labels. (See pages 10–11 for an example.)	<ul style="list-style-type: none">• Read each sign first and ask yourself questions: <i>Where would this notice appear? What is its purpose? Who is likely to read it?</i>• Read each option carefully and compare its meaning with the sign before deciding which option means the same as the sign.• Words in the sign may be repeated in an option, but this doesn't mean that it is the correct answer.
Part 2 Short texts	Exam tip
In this Part, you will be asked to match five people with eight other pieces of information or advertisements. (See pages 12–13 for an example.)	<ul style="list-style-type: none">• Read the information about the people and all the information in the short texts <u>before</u> you start matching them.• Make sure all of the information matches with the person/people rather than just one or two ideas.• Remember, three of the pieces of information are not used.
Part 3 Longer factual text	Exam tip
In this Part, you will be asked to decide whether ten statements are correct or incorrect according to a text. The text will be factual, such as an advertisement or an extract from a brochure. (See pages 14–15 for an example.)	<ul style="list-style-type: none">• Read the statements <u>before</u> you look at the text.• Read the text quickly to get a general idea of what it is about.• Read through the text again to find the information which relates to the statements. The statements will be in the order of the text.• Do not worry if you don't understand every word, you should still be able to find the information you need.
Part 4 Longer continuous text	Exam tip
In this Part, you will be asked to answer five multiple-choice questions based on a text which expresses an opinion or attitude, as well as giving factual information. (See pages 16–17 for an example.)	<ul style="list-style-type: none">• Read the text quickly to get a general idea of what it is about.• Read the text again more carefully and ask yourself questions: <i>Why has the writer written it? What is the writer's opinion? What will the reader find out from reading it? What is the general meaning of the text?</i>• Answer the questions, checking back with the text for each one.
Part 5 Cloze text	Exam tip
In this Part, both your knowledge of vocabulary and grammar will be tested. You will be asked to complete ten spaces in a text. Each space has a multiple-choice question with four options. (See page 18 for an example.)	<ul style="list-style-type: none">• Read through the text quickly, ignoring the spaces to get a general idea of what it is about.• Read from the beginning again, look at the words before and after the space and think about what word might go in the space.• Look at the options and decide which is correct. Try each of the words in the space before deciding on an option.

Writing

<p>Part 1 Transformations</p> <p>There are five questions in this Part and each question is on the same theme or topic. For each question, you will read a sentence and then complete a new sentence so that it means the same as the first. You will need to change the grammatical structure of the new sentence.</p> <p>(See page 19 for an example.)</p>	<p>Exam tip</p> <ul style="list-style-type: none"> • Read the original sentence very carefully and try to identify the grammatical structure it uses. • Read through the new sentence and try to work out what grammatical changes you need to make to complete it. • Check that you have included all the information from the first sentence in the second sentence.
<p>Part 2 Form-completion</p> <p>In this Part, you will be asked to complete ten questions on a form.</p> <p>(See page 20 for an example.)</p>	<p>Exam tip</p> <ul style="list-style-type: none"> • Read through the form once to get a general idea of its purpose. • Go back to the beginning and complete each question. One-word answers or short phrases are acceptable, as are numbers. • When you have finished, read through your work and check for careless errors of spelling, grammar and word order. Mistakes will lose marks.
<p>Part 3 Continuous writing</p> <p>In this Part, you will be asked to write a letter to an English-speaking friend. You will be given the context and some suggestions, and also the first line of the letter. You should write approximately 100 words.</p> <p>(See page 21 for an example.)</p>	<p>Exam tip</p> <ul style="list-style-type: none"> • Read the information you are given carefully and make sure you understand what the letter must contain. Note down a few ideas. • Put your ideas in order. • When you have completed your letter, make sure you write the correct type of ending for an informal letter. • Read through your work again, checking for careless errors of spelling, grammar and word order. Make sure that you have included the three points asked for in the question, or you will lose marks. • Don't forget your finished answer must be written on your answer sheet.

Paper 2: Listening (30 mins)

Part 1 Short extracts	Exam tip
<p>In this Part, you will hear seven short dialogues or monologues. Each listening text has one multiple-choice question which relates to four line drawings. (See pages 22–23 for an example.)</p>	<ul style="list-style-type: none"> • Look at each set of pictures before you hear the dialogue or monologue that goes with it. • Listen to the whole dialogue or monologue before you tick the correct answer. The listening text is likely to contain information that is later changed by one of the speakers.
Part 2 Longer factual monologue	Exam tip
<p>In this Part, you will hear a recording which includes a lot of factual information. There are six multiple-choice questions. Each question has four options. (See page 24 for an example.)</p>	<ul style="list-style-type: none"> • Read through the questions before you listen. • Do not spend too long on one question. Start by looking at the first question and listening for the information that will help you answer it correctly. • If you think you have missed the information you need for a question, go on to the next one. You can always try again when you hear the recording for the second time.
Part 3 Longer factual monologue	Exam tip
<p>In this Part, you will listen to a recording such as a radio programme. You will be asked to complete six questions with one or two words. (See page 25 for an example.)</p>	<ul style="list-style-type: none"> • If you think you have missed the information you need for a question, go on to the next one. Don't forget, you will hear the recording again. • Numbers can be written in words or figures. • You will be expected to spell simple words correctly although incorrect spelling of more difficult words is acceptable.
Part 4 Informal conversation	Exam tip
<p>In this Part, you will hear a conversation between two people in which they agree or disagree about various subjects. You will be asked to answer six Yes/No questions relating to the conversation. (See page 26 for an example.)</p>	<ul style="list-style-type: none"> • Listen out for the speakers' tone of voice. Sometimes the way somebody speaks can help you decide on their opinions and attitudes. • You have 12 minutes at the end of the Listening to transfer your answers to the answer sheet (see page 93 for an example).

Paper 3: Speaking (10–12 mins)

Part 1 Personal information	Exam tip
<p>In this Part, you have a general conversation with your partner during which you ask and answer personal questions. You will also be asked to spell some words and to give numbers, e.g. your candidate number. (See page 27 for an example.)</p>	<ul style="list-style-type: none"> • Use as much language as you can by giving full answers, not just one word answers. • Keep the conversation going by making sure you take your turn to ask questions. • Useful questions: <i>Where do you come from? Do you work or are you at school? Do you have any brothers or sisters? What is your home town like?</i>
Part 2 Simulated situation	Exam tip
<p>In this Part, the interlocutor will give you a task to complete with your partner which relates to a set of pictures. The pictures will give you ideas about what to discuss but you should also add your own. (See page 27 for an example.)</p>	<ul style="list-style-type: none"> • Make sure you complete the task and come to an agreement with your partner. • Useful expressions to agree with your partner: <i>I agree with you. Yes, that's what I think too. You're right.</i> • Useful expressions to politely disagree with your partner: <i>Yes, but don't you think...? True, but I think... I see what you mean, but...</i>
Part 3 Responding to photographs	Exam tip
<p>In this Part, you will each be asked to talk about the setting and activities in a photograph. The two photographs have a common theme. (See page 27 for an example.)</p>	<ul style="list-style-type: none"> • If you don't know the exact word for what you want to say, try to find other words which explain the meaning. You will get marks for doing this. • Useful expressions: <i>In my opinion, ... I'm not really sure but I think ... Both photos seem to be ...</i>
Part 4 Discussion	Exam tip
<p>In this Part, you will be asked to discuss a topic which relates to the common theme of the photographs in Part 3. (See page 27 for an example.)</p>	<ul style="list-style-type: none"> • If you haven't understood something that has been said, ask the person to repeat it. • Useful expressions: <i>I'm sorry, but could you say that again please? Can you repeat that please?</i>

Reading

Part 1

Questions 1–5

- Look at the sign in each question.
- Someone asks you what it means.
- Mark the letter next to the correct explanation – **A, B, C** or **D** – **on your answer sheet.**

Exam tip

- Read each sign first and ask yourself questions: *Where would this notice appear? What is its purpose? Who is likely to read it?*
- Read each option carefully and compare its meaning with the sign before deciding which option means the same as the sign.
- Words in the sign may be repeated in an option, but this doesn't mean that it is the correct answer.

Example:

0

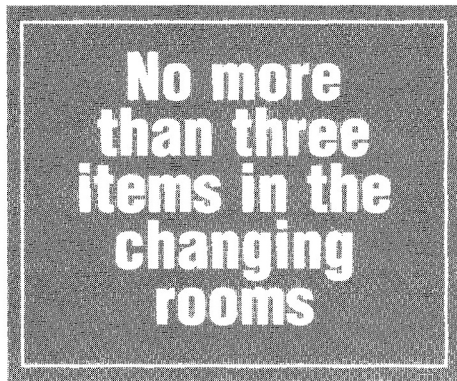


- A** You may not leave your rubbish here at all.
- B** Picnic food is provided here.
- C** Picnics are not allowed in this area.
- D** You should clear away your rubbish.

Example answer:

Part 1				
0	<u>A</u>	B	C	D

1



- A** There are three changing rooms in this shop.
- B** You cannot change any items bought in this shop.
- C** Do not take personal items into the changing rooms.
- D** You can try on a maximum of three things at a time.

2



When there is no one at the Reception Desk, please ring the bell.

- A** There is no bell at reception at the moment.
- B** If necessary, ring the bell for attention.
- C** There is no one working here at the moment.
- D** Please ring the bell when you arrive at the desk.

- 3
- For large parcels
just use
windows 9, 10
and 11**
- A This post office does not accept large parcels.
 B Most of the windows here can take parcels.
 C Large parcels can only be sent from some windows.
 D You must take all parcels to windows 9, 10, and 11.
- 4
- Men's haircuts
half-price all week
- no appointment
necessary*
- A Men can have their hair cut more cheaply this week.
 B Men need to make appointments at this hairdresser's.
 C Anybody can have a half-price haircut at the moment.
 D Prices of all haircuts will be reduced next week.
- 5
- Non-swimmers
DO NOT
pass this point
- A Unless you can swim, you may not enter this pool.
 B If you can't swim, you mustn't use all of the pool.
 C Wait at this point if you are having swimming lessons.
 D You must not pass non-swimmers in the pool.

Part 2

Questions 6–10

- The people below are all looking for holidays.
- On the opposite page there are descriptions of eight holidays.
- Decide which holiday (**letters A–H**) would be the most suitable for each person, couple or family (**numbers 6–10**).
- For each of these numbers mark the correct letter **on your answer sheet**.

Exam tip

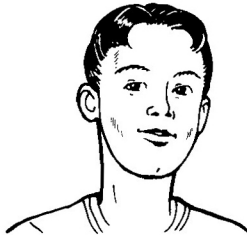
- Read the information about the people and all the information in the short texts **before** you start matching them.
- Make sure all of the information matches with the person/people rather than just one or two ideas.
- Remember, three of the pieces of information are not used.

6



Paul and Anne live in the city so they don't often go walking which is their favourite hobby. They enjoy being outside and would like some evening entertainment where they can meet new people.

7



James is travelling on his own this year and would like to meet other people. He quite enjoys sport and doesn't have a lot of money.

8



Helen and Sue have been working hard recently. They would like to take a short break to relax and think about their health and their appearance.

9



Jack and Lisa would like to go on a short break which will give them the chance to visit ancient places and learn about their history from experts.

10



The Robinson family would like a seaside holiday but they also want opportunities for organised activities for their children.

A Spectacular Scandinavia

Why not do something different this summer and go on one of Europe's most spectacular train journeys – a 14-day tour of Norway and Sweden? The holiday includes return flights from London to Stockholm, a two-person sleeper on the train, 12 nights dinner, bed and breakfast, and sightseeing tours and excursions. Family sleepers also available.

B Sightseeing in China

Spend four unforgettable days in China staying in a 4-star hotel. Experience amazing sightseeing opportunities at the Forbidden City, Tiananmen Square and the astonishing Great Wall. Price includes flights, accommodation and food, and some guided tours.

C Discover Sydney

Fly to Sydney, Australia, and enjoy the wonderful things the city has to offer. Visit great restaurants for excellent food and wines, climb to the top of Sydney Harbour Bridge or go to a performance at the Royal Opera House. Ring us now. You'll be surprised at how affordable this trip is.

D Weekend breaks

Take a break in relaxing surroundings in one of our ten top quality countryside properties across the UK. All our properties offer an excellent choice of meals as well as evening cabaret. There are numerous footpaths in our superb gardens, which take you through woodland, past lakes and across farmland.

E Time to relax

Every now and then you deserve a change from your daily routine, a chance to spend some time looking after yourself. So why not take a two-night break for two people at one of our 350 quality hotels in the UK? Enjoy our beauty treatments, relax in the jacuzzi or try out our gym. We have trainers who can give you expert advice.

F Relax in Portugal

Portugal – miles and miles of wide, sandy beaches to walk on, and days and days of wonderful sunshine. Parents who want some time to themselves can trust The Kids' Club to safely entertain their children with a superb programme of sporting activities.

G Nile Cruise

Take a two-week cruise to Upper Egypt and watch the history of Egypt float by. The ship is a 5-star vessel with 4 decks. The 65 cabins all have bathrooms with shower and hairdryer. In the evenings you can dine on delicious food and let us do the entertaining. Children welcome.

H Ski experience

Flights, accommodation, tuition fees, ski pass all included – just concentrate on getting down the slope because there's food, entertainment and plenty of people waiting for you at the bottom. Reasonable prices for single people.

Part 3**Questions 11–20**

- Look at the statements below about *Talk Now* language courses.
- Read the text on the opposite page to decide if each statement is correct or incorrect.
- If it is correct, mark **A on your answer sheet**.
- If it is not correct, mark **B on your answer sheet**.

Exam tip

- Read the statements before you look at the text.
- Read the text quickly to get a general idea of what it is about.
- Read through the text again to find the information which relates to the statements. The statements will be in the order of the text.
- Do not worry if you don't understand every word, you should still be able to find the information you need.

- 11** It takes a long time to learn a language with these courses.
- 12** The courses can be used by people planning to live abroad.
- 13** The courses are being sold at a lower price than before.
- 14** It is cheaper to buy more than one course.
- 15** After using a course you will be able to communicate basic information.
- 16** It is necessary to repeat words and phrases many times when using the courses.
- 17** The courses are only suitable for adults.
- 18** The courses provide the opportunity to practise pronunciation.
- 19** Money will be returned at any time.
- 20** All orders are supplied within a week.

PICK UP A LANGUAGE FAST WITH TALK NOW!

Are you going on holiday next year and are you worried because you don't know a word of the language?

Are you thinking about moving to another country and want to know the basics of the language first?

Are you thinking about travelling around the world and want to know a little of several different languages?

If you answered 'yes' to any of these questions then *Talk Now* language courses are definitely right for you. They're simply the most effective way for beginners to 'get by' in a foreign language.

BEGINNER'S COURSES ON CD-ROM

Available in 33 languages, these courses are sensational value, which is why we've already sold thousands of them. And now we're offering them at £19.99 each, saving you £5 on the former price of £24.99. That's fantastic value! And, even better, if you choose two courses, you pay only £35. What an even greater saving!

SCHOOL – HOLIDAY – BUSINESS

Talk Now is ideal for all the family. The courses are useful for schoolwork and are invaluable for holidays and business trips. 'First words', phrases, numbers and time, food and shopping all become second nature – you'll learn all the language you need in everyday situations. And as every traveller knows, local people 'open up' and become warm, helpful human beings when you can put a few words together in their language. Doors open, friendships form – all through the magic of language.

IT'S SO EASY

Learning a language doesn't have to be dull. Forget endlessly repeating words and sentences and talking about unimaginative subjects. It's variety that keeps us interested, so enjoy simple games, exercises and challenges on your PC or Mac computer and you'll find out how much pleasure you can have from learning a new language. Being interactive, *Talk Now* is particularly powerful – because as any teacher will tell you, the best way to learn is by seeing, hearing AND doing. Not only that, it's great fun to use. You can also print out achievement certificates – children love these – or use a microphone to compare your pronunciation with native speakers.

DREAM GUARANTEE

14 day money-back guarantee
Secure online ordering
Normally shipped in 7–10 days
Technical helpline available

Part 4

Questions 21–25

- Read the text and questions below.
- For each question, mark the letter next to the correct answer – **A, B, C or D** – on your answer sheet.

Exam tip

- Read the text quickly to get a general idea of what it is about.
- Read the text again more carefully and ask yourself questions: *Why has the writer written it? What is the writer's opinion? What will the reader find out from reading it? What is the general meaning of the text?*
- Answer the questions, checking back with the text for each one.

Letter to a magazine

One day, when I was sitting in a huge traffic jam on the way to school, I started thinking about how miserable everybody looked stuck in their cars. Why did they do it, I wondered. Why didn't they walk instead? What were all these cars doing to the environment? I imagined the world in fifty years' time. What would it be like? If people carried on driving, I decided, pollution would get worse and worse.

When I got to school that day, I asked a few of my friends to start a club with me. We called ourselves *The Environment People*. We knew we couldn't change the world, or make the government improve public transport, but we decided we could at least change our own lifestyles. We also decided to think about all sorts of ways we could help protect our environment.

First of all, we made a list of things we could do, such as walking to school, saving paper, recycling bottles and cans. Then we made posters and stuck them up all over the school. Soon lots of the other students were really interested in what we were doing and groups started meeting up to walk to school instead of going in their parents' cars.

I think other young people should do more to protect the environment, after all, it's our future.

- 21** What is the writer trying to do in this text?
- A** encourage others to think about the environment
 - B** give information about the environment
 - C** advise people to use public transport
 - D** warn young people about their lack of fitness
- 22** What is the writer afraid will happen in the future?
- A** People will no longer walk anywhere.
 - B** Car drivers will become more depressed.
 - C** There will be more pollution.
 - D** Traffic jams will get longer.

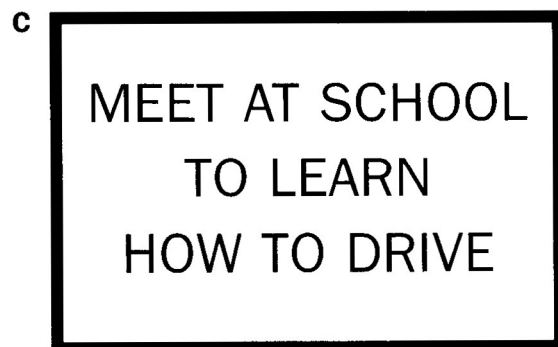
23 Which of the following did they realise they couldn't do?

- A start a club
- B help protect the environment
- C improve bus and train services
- D change the way they live

24 What did *The Environment People* decide to do?

- A write a letter to the government
- B write down what action they could take
- C persuade people to use public transport
- D join up with other similar clubs

25 Which of the posters below do you think *The Environment People* made?



Part 5

Questions 26–35

- Read the passage below and choose the correct word for each space.
- For each question, mark the letter next to the correct word
– **A, B, C** or **D** – **on your answer sheet.**

Exam tip

- Read through the text quickly, ignoring the spaces to get a general idea of what it is about.
- Read from the beginning again, look at the words before and after the space and think about what word might go in the space.
- Look at the options and decide which is correct. Try each of the words in the space before deciding on an option.

Example answer:

Part 5				
0	A	B	C	D
	<input checked="" type="checkbox"/>	<input type="checkbox"/>	<input type="checkbox"/>	<input type="checkbox"/>

BIRTH RATE TRENDS

More (0) more parents in Europe and the United States are having (26) one child. In Europe the average (27) of children per woman is 1.46. In Spain, the birth rate (28) halved in a generation. Italy has (29) lowest birth rate in the world with 1.18 children per woman. In Germany and Portugal the majority of families only have one child and in Britain, 17% of (30) have one child.

This trend is because (31) changes in lifestyle. More women are working and making (32) for themselves before starting a family. This (33) they are older and may not want a second child. In most countries, including Britain, work hours and family life do not go together. The birth rate is the lowest in countries (34) governments have not (35) responsibility for this problem.

- | | | | | |
|-----------|------------------|------------------|----------------------|----------------------|
| 0 | A and | B but | C between | D or |
| 26 | A exactly | B still | C just | D especially |
| 27 | A figure | B score | C sum | D number |
| 28 | A was | B has | C had | D is |
| 29 | A a | B the | C more | D as |
| 30 | A couples | B pairs | C partners | D companions |
| 31 | A by | B to | C of | D for |
| 32 | A jobs | B careers | C occupations | D professions |
| 33 | A says | B knows | C means | D seems |
| 34 | A which | B that | C who | D where |
| 35 | A made | B done | C taken | D given |

Writing

Part 1

Questions 1–5

- Here are some sentences about school.
- For each question, finish the second sentence so that it means the same as the first.
- The second sentence is started for you. **Write only the missing words on your answer sheet.**
- You may use this page for any rough work.

Exam tip

- Read the original sentence very carefully and try to identify the grammatical structure it uses.
- Read through the new sentence and try to work out what grammatical changes you need to make to complete it.
- Check that you have included all the information from the first sentence in the second sentence.

Example: We were given a difficult exam by our teacher yesterday.

Our teacher *gave us a difficult exam yesterday.*

1 I may do well in the exam, in which case I will study English at university.

If **English at university.**

2 My teacher told me I was good at languages.

My teacher said 'You **'**

3 I found French difficult when I was younger.

I used **when I was younger.**

4 School isn't as much fun as university.

University

5 Children must go to school until they are 16 years old.

Children have **until they are 16 years old.**

Part 2

Questions 6–15

- You have just finished doing an English course at a language school in London.
- The school would like to know what you thought of your experience.
- Look at the questionnaire and answer each question.
- **Write your answers on your answer sheet.**
- You may use this page for any rough work.

Exam tip

- Read through the form once to get a general idea of its purpose.
- Go back to the beginning and complete each question. One-word answers or short phrases are acceptable, as are numbers.
- When you have finished, read through your work and check for careless errors of spelling, grammar and word order. Mistakes will lose marks.

The English School, Baker Street, London, WC4 7LJ, UK.

STUDENT QUESTIONNAIRE

Full name: (6)

Full home address: (7)

Date of birth (day/month/year): (8)

Sex: (9)

Level of course: (10)

What did you think of the books and other materials you used? (11)
.....

How do you think your English has improved as a result of your course? (12)
.....

What type of accommodation did you stay in? (13)
.....

How often were trips and excursions organised? (14)
.....

What did you like best or least about the course? (15)
.....

Part 3

Question 16

- You have just come back from a family holiday abroad.
- Now you are writing a letter to an English-speaking friend to tell him/her about your holiday.
- Describe where you stayed, explain what the weather was like and say what you particularly enjoyed about the holiday.
- **Finish the letter on your answer sheet, using about 100 words.**

NOTES

Checklist

- Read the information you are given carefully and make sure you understand what the letter must contain. Note down a few ideas in the box.
- Put your ideas in order.
- When you have completed your letter, make sure you write the correct type of ending for an informal letter.
- Read through your work again, checking for careless errors of spelling, grammar and word order. Make sure that you have included the three points asked for in the question, or you will lose marks.
- Don't forget your finished answer must be written on your answer sheet.

Dear

I've just come back from a holiday in another country.

.....

.....

.....

.....

.....

.....

.....

.....

.....

.....

.....

Remember, in the PET you must write your answers on the separate answer sheet.

Part 1

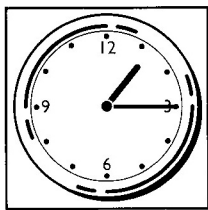
Exam tip

- Look at each set of pictures before you hear the dialogue or monologue that goes with it.
- Listen to the whole dialogue or monologue before you tick the correct answer. The listening text is likely to contain information that is later changed by one of the speakers.

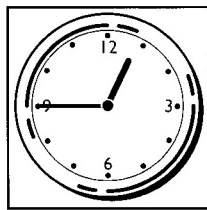
Questions 1–7

- There are seven questions in this Part.
- For each question there are four pictures and a short recording.
- You will hear each recording twice.
- For each question, look at the pictures and listen to the recording.
- Choose the correct picture and put a tick [✓] in the box below it.

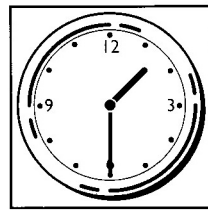
Example: What time does the film start?



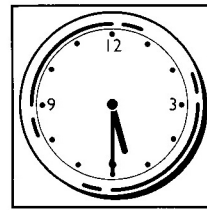
A



B

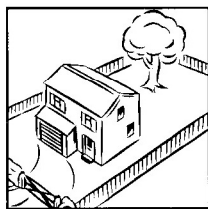


C

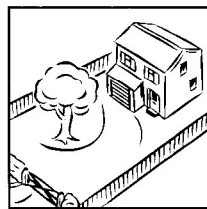


D

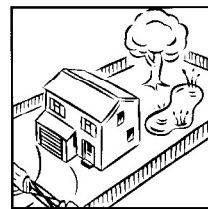
1 Which house is the woman going to buy?



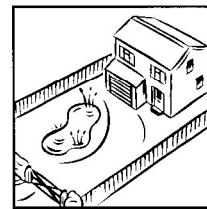
A



B

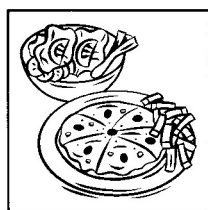


C

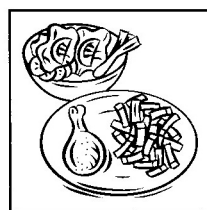


D

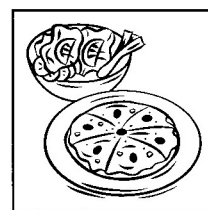
2 What does the man want to eat?



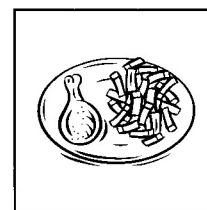
A



B

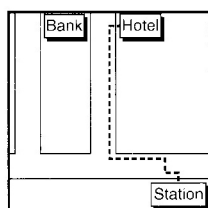


C

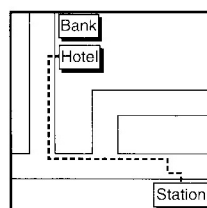


D

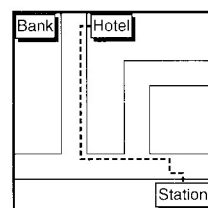
3 Where is the hotel?



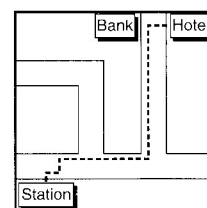
A



B



C

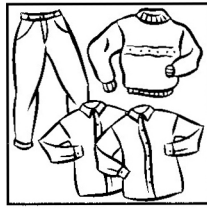


D

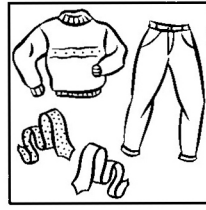
4 What did the man buy?



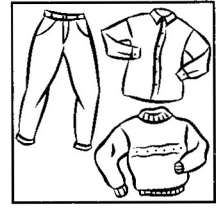
A



B



C



D

5 Which is Tim's girlfriend?



A



B



C

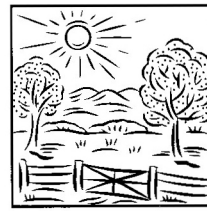


D

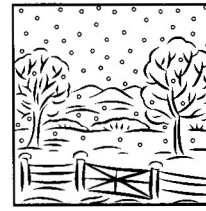
6 What will the weather be like tomorrow?



A



B



C



D

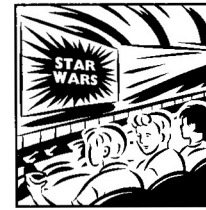
7 What are the boys doing today?



A



B



C



D

Part 2

Questions 8–13

- Look at the questions for this Part.
- You will hear a guide welcoming a group of visitors to *The Jungle Experience*.
- Put a tick [✓] in the correct box for each question.

Exam tip

- Read through the questions before you listen.
- Do not spend too long on one question. Start by looking at the first question and listening for the information that will help you answer it correctly.
- If you think you have missed the information you need for a question, go on to the next one. You can always try again when you hear the recording for the second time.

- 8 How long will the tour take?
- A a few minutes
 B half an hour
 C an hour and a half
 D two hours
- 9 During the tour visitors will be able to
- A answer questions.
 B listen to a talk.
 C visit the shop.
 D touch some of the animals.
- 10 Which of the following can you eat in the café?
- A biscuits
 B hot dogs
 C soup
 D sandwiches
- 11 *The Jungle Experience* aims to inform people about
- A what is taking place in jungles everywhere.
 B different problems for the environment.
 C how wildlife and plants live together.
 D why animals live in the jungle.
- 12 What do you need to do if you want to go on a night tour?
- A arrive before 7 p.m.
 B reserve a place
 C come with other people
 D pay by credit card
- 13 What do you get if you become a Friend of the Jungle?
- A a chance to become a volunteer
 B plenty of information
 C special prices for some things
 D free entrance for a year

Part 3**Questions 14–19**

- Look at the notes about a Family Railcard.
- Some information is missing.
- You will hear a presenter talking on the radio about using a Family Railcard.
- For each question, fill in the missing information in the numbered space.

Exam tip

- If you think you have missed the information you need for a question, go on to the next one. Don't forget, you will hear the recording again.
- Numbers can be written in words or figures.
- You will be expected to spell simple words correctly although incorrect spelling of more difficult words is acceptable.

Family Railcard

Cost: (14)

What you can save: $\frac{1}{3}$ off adult tickets

60% off children's tickets – under fives go (15)

Card users: Two named cardholders, two other (16) and (17) children

Bonus: Apply now and get (18) extra free

How to apply: Fill in a form at your (19)

Part 4

Questions 20–25

- Look at the six statements for this Part.
- You will hear a conversation between a woman, Sally, and a man, Paul. They have just looked round a house and are deciding whether to buy it.
- Decide if you think each statement is correct or incorrect.
- If you think it is correct, put a tick [✓] in the box under **A** for **YES**.
If you think it is not correct, put a tick [✓] in the box under **B** for **NO**.

Exam tip

- Listen out for the speakers' tone of voice. Sometimes the way somebody speaks can help you decide on their opinions and attitudes.
- You have 12 minutes at the end of the Listening to transfer your answers to the answer sheet (see page 93 for an example).

	A YES	B NO
20 Paul liked the house.	<input type="checkbox"/>	<input type="checkbox"/>
21 Sally thinks the dining room is too small.	<input type="checkbox"/>	<input type="checkbox"/>
22 Paul agrees they need a new table.	<input type="checkbox"/>	<input type="checkbox"/>
23 They both liked the kitchen.	<input type="checkbox"/>	<input type="checkbox"/>
24 Sally likes all the carpets.	<input type="checkbox"/>	<input type="checkbox"/>
25 Paul thinks the house is expensive.	<input type="checkbox"/>	<input type="checkbox"/>

Part 1 General conversation (2–3 minutes)

Ask each other questions in order to find out information about personal details, home town, schools, jobs, family, etc.

Part 2 Simulated situation (2–3 minutes)

You and a group of your friends want to do something to celebrate the end of your exams and you have been asked to come up with some ideas.

Look at the pictures on page 28.

Talk about what kind of things would be most fun.

Part 3 Responding to photographs (3 minutes)

Candidate A should look at photograph 1 on page 29, show it to Candidate B and talk about it.

Candidate B should look at photograph 2 on page 29, show it to Candidate A and talk about it.

Part 4 General conversation based on the photographs in Part 3
(3 minutes)

Talk to each other about what your experience of education has been. Talk about the things you like and dislike about the education system in your country.

Exam tip

- Use as much language as you can by giving full answers, not just one word answers.
- Keep the conversation going by making sure you take your turn to ask questions.
- Useful questions: *Where do you come from? Do you work or are you at school? Do you have any brothers or sisters? What is your home town like?*

Exam tip

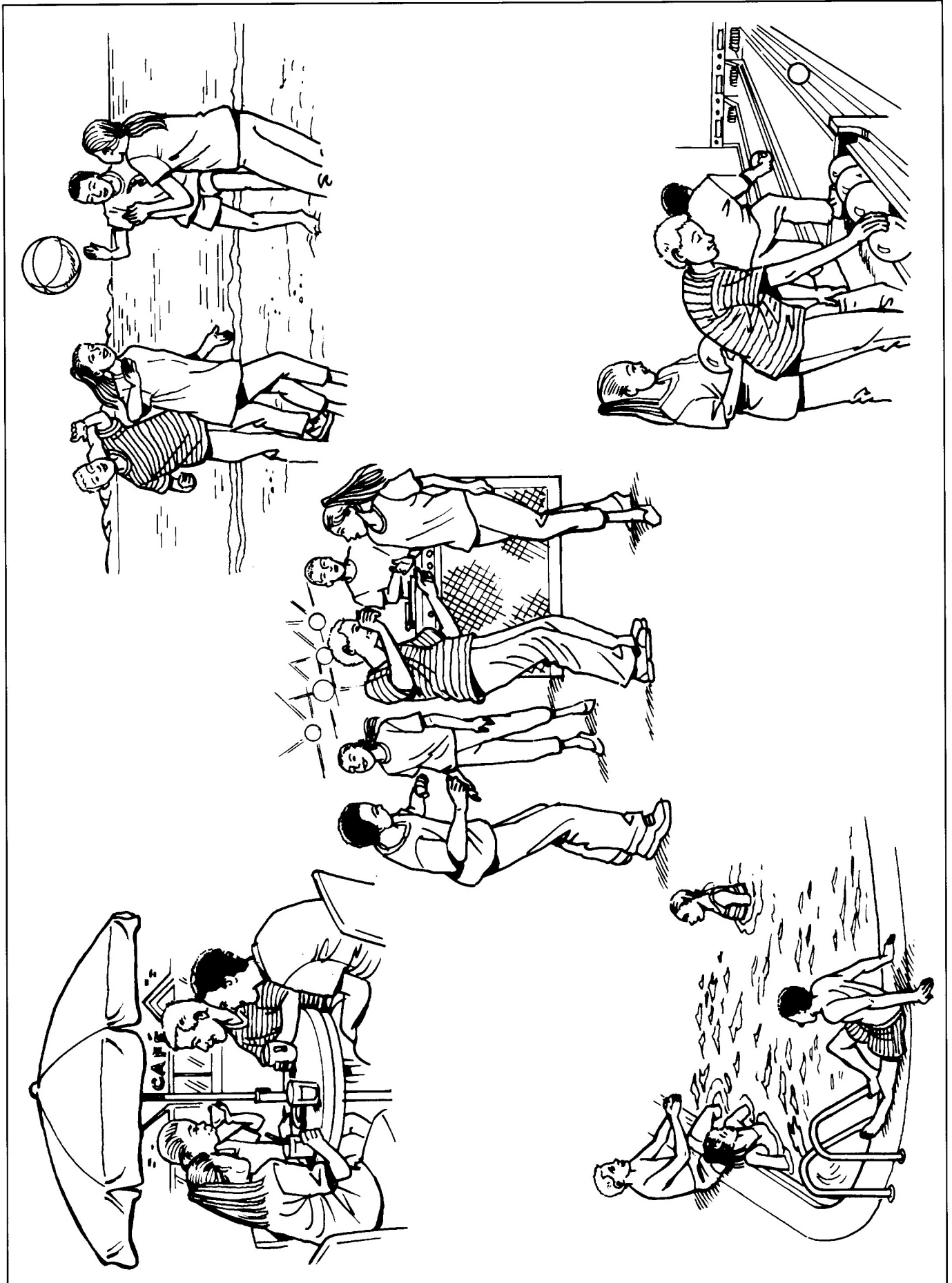
- Make sure you complete the task and come to an agreement with your partner.
- Useful expressions to agree with your partner: *I agree with you. Yes, that's what I think too. You're right.*
- Useful expressions to politely disagree with your partner: *Yes, but don't you think...? True, but I think... I see what you mean, but...*

Exam tip

- If you don't know the exact word for what you want to say, try to find other words which explain the meaning. You will get marks for doing this.
- Useful expressions: *In my opinion, ... I'm not really sure but I think ... Both photos seem to be ...*

Exam tip

- If you haven't understood something that has been said, ask the person to repeat it.
- Useful expressions: *I'm sorry, but could you say that again please? Can you repeat that please?*





B This piece of clothing can be professionally cleaned.



Reading

Part 1

Questions 1–5

- Look at the sign in each question.
- Someone asks you what it means.
- Mark the letter next to the correct explanation – **A, B, C** or **D** – **on your answer sheet.**

Example:

0



- A** You may not leave your rubbish here at all.
- B** Picnic food is provided here.
- C** Picnics are not allowed in this area.
- D** You should clear away your rubbish.

Example answer:

Part 1				
0	A	B	C	D
	<input checked="" type="checkbox"/>	<input type="checkbox"/>	<input type="checkbox"/>	<input type="checkbox"/>

1



- A** You can park here for 24 hours only.
- B** There is no entrance to the car park for 24 hours.
- C** Nobody can park here during the day or at night.
- D** It is possible to park here at certain hours of the day.

2

Please leave correct change for newspapers in the box provided.

- A** A box of newspapers is provided for customers.
- B** Customers must leave the exact money for the papers.
- C** It is possible to get change when paying for a paper.
- D** Customers can change the newspapers in the box.

3

Hiring waiters now
Up to €8 per hour
Telephone for
more information

- A This restaurant is cheap to hire.
- B Waiters are needed for more telephone calls.
- C This restaurant takes telephone bookings.
- D Extra staff are required here immediately.

4

*Landlord wants
cookers, fridges,
freezers, washing
machines, etc.
Cash paid.*

- A You can sell something to this man.
- B Electrical machines are available here.
- C You can pay this man for things with cash.
- D Landlords are needed for paid work.

5

Hand wash in
cold water or
dry clean

- A You cannot clean this piece of clothing in cold water.
- B This piece of clothing can be professionally cleaned.
- C You can clean this piece of clothing in a washing machine or by hand.
- D Dry cleaning is the only way to wash this piece of clothing.

Part 2

Questions 6–10

- The people below are all looking for a job for a short period of time.
- On the opposite page there are descriptions of eight jobs.
- Decide which job (**letters A–H**) would be the most suitable for each person (**numbers 6–10**).
- For each of these numbers mark the correct letter **on your answer sheet**.

6



Paul has just finished school and is taking a year off before he does a food technology course. He would like to gain some experience in this area.

7



Sally is considering a career in nursing the elderly but would like to find out what is involved before she starts training. She is willing to help somewhere for free.

8



Helen has just finished studying languages at university and is planning to do a teaching qualification next year. She enjoyed living abroad during her course and would like to do this again.

9



John has given up his job as an engineer and is doing a full-time computing course. He wants to earn some money outside his normal college hours of 9 a.m. to 5 p.m.

10



Anna has just returned from America where she worked at a summer camp for teenagers. She's going back in six months because she really enjoyed it but in the meantime wants to find some work.

A Martin's Supermarket

We are looking for additional staff in checkout sales and customer services. Daytime only (part-time hours can be agreed). No previous experience necessary. Generous staff benefits include free restaurant, food discounts and travel allowance.

B Ivy Place

Volunteers needed in our friendly old people's home. Suitable for anyone wanting unpaid experience in care work. Light duties only, such as serving coffee, helping our more elderly residents and playing board games! Any daytime hours acceptable, temporary assistance also welcome.

C Happy Days After-School Care

Play leaders needed for the after-school club. We run a number of play schemes in the area. Ages range from 5 – 15. Must have previous experience of working with children and plenty of ideas for entertainment.

D Clothes For Little Ones

Children's clothes shop requires part-time shop assistant. The hours are 9 a.m. – 6 p.m. Wednesdays, Thursdays and Fridays. Benefits include staff discounts. Experience is preferred. If you are interested and would like to join our friendly team, phone Linda on 935703.

E Helping Hands

Part-time mini-bus drivers needed for small local service providing transport for disabled and elderly people. Hours by agreement, reasonable pay. Evening work often available. Weekend day trips sometimes required.

F City Clean

Part-time cleaners are required in busy offices around the city. Monday to Friday 6 a.m. – 10 a.m. We pay £50 per week and provide uniforms and equipment. We also have a mini-bus that will pick up from several places in the city. In return, we expect good quality work from our staff.

G Six-Month Childcare Position (France)

Are you friendly and cheerful? We need someone to look after our two children (9 and 5) in return for food, accommodation and pocket money. Evenings and weekends free. The children speak a little English but want to learn more!

H Micros Hypermarket

A fresh food assistant is wanted for the fish counter to prepare and display the highest quality fish and to provide an efficient service to all our customers. Some training will be provided. Morning hours only, good pay and friendly environment.

Part 3

Questions 11–20

- Look at the statements below about the *Cotswold Wildlife Park*.
- Read the text on the opposite page to decide if each statement is correct or incorrect.
- If it is correct, mark **A on your answer sheet**.
- If it is not correct, mark **B on your answer sheet**.

- 11** All the animals are kept in cages for visitors' safety.
- 12** The monkeys are in an area on their own.
- 13** There is extra entertainment for children.
- 14** The park is open daily throughout the year.
- 15** The park closes at the same time every month.
- 16** Drivers must pay a fee to park coaches.
- 17** There is more than one place to buy food.
- 18** Children must be accompanied by an adult while in the shop.
- 19** Keepers only give out information at feeding times.
- 20** Talks are only given to school children.

COTSWOLD WILDLIFE PARK AND GARDENS

The Cotswold Wildlife Park is set in 160 acres of beautiful gardens and parkland around a Victorian Manor House. Every year, over 300,000 people visit this large collection of animals situated in the peaceful Cotswold countryside. Rhinos, zebras, camels and ostriches wander in large grassy areas where only a fence separates them from the public. Asiatic Lions, Amur Leopards, Red Pandas and Giant Tortoises are some of our more unusual animals.

In the Walled Gardens are the ever-popular penguins, tropical birds and mammals such as meerkats, monkeys and otters.

Undercover there is a Tropical House, a Reptile Courtyard, Insect House and over 200 fruit bats.

The gardens, which have large picnic areas, make an ever-changing natural setting for the Park. As well as the animals, the Adventure Playground and railway will delight the young. Your visit to the Cotswold Wildlife Park will provide you with a day out in the fascinating world of animals, in some of England's most beautiful countryside.

PARK AMENITIES AND INFORMATION

OPENING TIMES

The Park is open from 10.00 a.m. every day except Christmas Day.
Last admissions are at 4.30 p.m. March to September, 4 p.m. October, 3.30 p.m. November to February.

PARKING

Car and coach parking is free.

DOGS

Dogs on a lead are welcome.

OAK TREE RESTAURANT

Serves hot meals and snacks. A sandwich bar and refreshment kiosks are also available.

CHILDREN'S FACILITIES

Adventure playground
Railway
Children's shop – please note that children are not allowed to enter the shop unless they are with a grown-up (over 18 years old)

DISABLED FACILITIES

The park has easy access and toilet facilities for the disabled.
Wheelchairs are available.

ANIMAL ENCOUNTERS

Talks are given at the penguin feeding times (11.00 a.m. and 4.00 p.m. except Fridays).
Other animals are fed throughout the day and keepers are on hand at all times to answer any questions.

For further information on:

ADOPTIONS

SEASON TICKETS

and

GROUP DISCOUNTS

(for twenty or more persons)
Please contact the General Office or visit the website www.cotswoldwildlifepark.co.uk

EDUCATION

The Park's staff can give talks to school or other parties on a range of animal and conservation topics, usually illustrated or using live subjects.
Please telephone for details.

Part 4**Questions 21–25**

- Read the text and questions below.
- For each question, mark the letter next to the correct answer – **A, B, C** or **D** – on your answer sheet.

My Perfect Holiday

My perfect holiday used to be two weeks in a hotel with no cooking, no cleaning and staff waiting on me all day. After we had children we found it easier to choose places where kitchen facilities were included and we did the cooking. It was a generally more convenient option although we tended to stay in Britain because of the cost. Then a friend of mine introduced us to the idea of house-exchange holidays.

At first, the thought of staying in somebody else's home, with all the worries of keeping it clean and tidy and being constantly careful not to break anything, was unthinkable. Equally, I didn't like the idea of complete strangers wandering about in my home, using my bathroom and sleeping in my bed. However, my friend described how she and her husband and their two children had spent two weeks in Florida for the price of the flight. She told me how they had stayed in a lovely apartment in the heart of the real Florida, well away from the tourist traps. They had had no problems with the family of four that had stayed in their house in London.

Because they were so positive we decided to try it ourselves. We joined a house-exchange agency, chose the countries we were interested in visiting and were soon sent information on possible swaps. Finally we chose a family in Vancouver, went away and had the best holiday we'd ever had. That was five years ago. Since then we've been to Prague, Finland, Edinburgh, Washington and Sydney.

- 21** What is the writer trying to do in the text?
- A** describe a fantastic holiday she had in Florida
 - B** complain about the high cost of holidays
 - C** warn against having a holiday in a hotel
 - D** suggest a different type of holiday
- 22** Why didn't the writer like the idea of staying in somebody else's home?
- A** because she would need to use their bathroom
 - B** because she would have to worry about looking after the place
 - C** because she would be responsible for security
 - D** because she would have to sleep in a strange bedroom

- 23 What did the writer's friend like about her house-exchange?
- A the opportunities for tourists
 - B the fact that it was good value
 - C the genuine design of their apartment
 - D the four families who stayed in London
- 24 Why did the writer and her family decide to try a house-exchange holiday?
- A her family were bored with their usual holidays
 - B she liked the idea of going to Florida
 - C some friends had had a good experience
 - D she needed to spend less on a holiday
- 25 What would be a good headline for the article?

A

**What can we do to
make our homes
more attractive?**

C

**When is it the
right time to
move abroad?**

B

**How can we
see the world
and pay less?**

D

**Where can you
find the best
hotels in Europe?**

Part 5

Questions 26–35

- Read the passage below and choose the correct word for each space.
- For each question, mark the letter next to the correct word – **A, B, C** or **D** – **on your answer sheet.**

Example answer:

Part 5				
0	A	B	C	D

MAKING RECYCLING EASIER

More and more of the products we buy have got recycled material in (0) Things like newspapers and magazines, glass bottles and jars, food and drink cans and even some clothing may have been (26) using recycled materials. (27) time we buy one of these products we help to support the recycling industry. The aim is that the product is used (28) , recycled and then used again.

One of the (29) in which we can help the recycling process is by saving our own waste. Over the next (30) of weeks we'll begin a fortnightly collection of recyclable waste, from your home. All you have to (31) is put your recyclable waste in the box we've given you and put the box out (32) to your dustbin. The collection is fortnightly, (33) remember to look at the sticker on the box that (34) you which weeks we will collect it. Your dustbin will (35) be collected weekly.

- | | | | | |
|-----------|-------------------|-----------------|-----------------|-------------------|
| 0 | A them | B it | C us | D theirs |
| 26 | A put | B got | C made | D taken |
| 27 | A Many | B Most | C Every | D All |
| 28 | A once | B ever | C only | D yet |
| 29 | A methods | B ways | C things | D means |
| 30 | A two | B couple | C pair | D twin |
| 31 | A do | B want | C have | D go |
| 32 | A beside | B along | C by | D next |
| 33 | A because | B so | C unless | D although |
| 34 | A speaks | B says | C asks | D tells |
| 35 | A together | B still | C just | D nearly |

Writing

Part 1

Questions 1–5

- Here are some sentences about clothes.
- For each question, finish the second sentence so that it means the same as the first.
- The second sentence is started for you. **Write only the missing words on your answer sheet.**
- You may use this page for any rough work.

Example: They gave the clothes designer an award for her work.

The clothes designer *was given an award* **for her work.**

1 My aunt bought me a horrible dress for my sixth birthday.

The dress my aunt **horrible.**

2 When I was a teenager I loved clothes.

I used **I was a teenager.**

3 My mother was stricter than my father about clothes.

My father wasn't as **about clothes.**

4 I was taken to buy something to wear for the wedding by my mother.

My mother **something to wear for the wedding.**

5 I told her it was the worst dress I had ever seen.

I said to her, 'This **'**

Part 2

Questions 6–15

- You are going to take part in a university exchange programme in the UK.
- You have received this application form.
- Look at the form and answer each question.
- **Write your answers on your answer sheet.**
- You may use this page for any rough work.

44 Rackall Road, Loughborough, Leicestershire, LP7 3PY, UK.

UNIVERSITY EXCHANGE APPLICATION FORM

Full name: (6)

Home address (including country): (7)

Nationality: (8)

Date of birth (day/month/year): (9)

Sex: (10)

What course are you currently studying? (11)

How will you travel to Britain? (12)

Which part of the UK would you prefer to study in? (13)

Why do you want to take part in the exchange programme? (14)

How did you hear about the exchange programme? (15)

Part 3

Question 16

- You are working in a hotel over the summer holidays.
- Now you are writing a letter to an English-speaking friend to tell him/her all about what you are doing.
- Tell your friend something about the job, describe the hotel and say what you like about working there.
- **Finish the letter on your answer sheet, using about 100 words.**

NOTES

Dear

I'm working in a hotel over the summer holidays.

.....

.....

.....

.....

.....

.....

.....

.....

.....

.....

.....

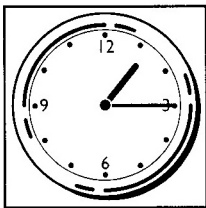
Remember, in the PET you must write your answers on the separate answer sheet.

Part 1

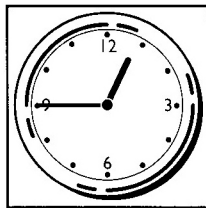
Questions 1 – 7

- There are seven questions in this Part.
- For each question there are four pictures and a short recording.
- You will hear each recording twice.
- For each question, look at the pictures and listen to the recording.
- Choose the correct picture and put a tick [✓] in the box below it.

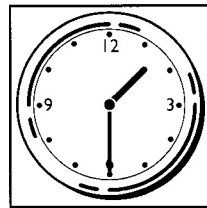
Example: What time does the film start?



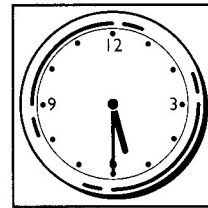
A



B

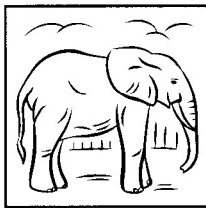


C

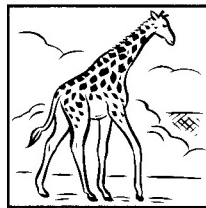


D

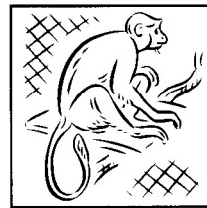
1 Where are they going next?



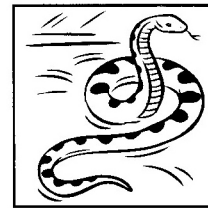
A



B



C



D

2 How will the man get into town?



A



B

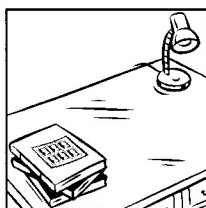


C

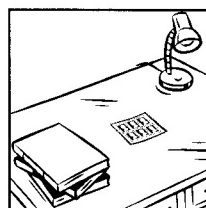


D

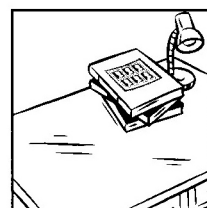
3 Where are the stamps?



A



B



C



D

4 What happened?



A



B



C



D

5 What are Nicola and Mike doing for their wedding anniversary?



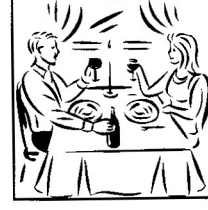
A



B



C



D

6 What will the woman wear for her interview?



A



B



C



D

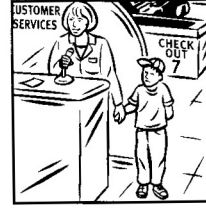
7 Which is Billy?



A



B



C



D

Part 2

Questions 8–13

- Look at the questions for this Part.
- You will hear a recorded message about the Modern Art Museum in Nottingham.
- Put a tick [✓] in the correct box for each question.

- 8** The galleries will open again
- A** on 22nd October.
- B** at the beginning of January.
- C** on 3rd November.
- D** at the end of January.
-
- 9** When does the museum stay open late?
- A** Tuesdays
- B** Wednesdays
- C** Thursdays
- D** Sundays
-
- 10** Which group can enter the museum for £1 per person?
- A** groups of less than ten
- B** groups of more than ten that book
- C** groups of ten or more children
- D** groups that visit on Thursdays
-
- 11** What can children do at the museum on Saturdays?
- A** listen to an artist
- B** take part in painting and other activities
- C** read about a painter's work
- D** design a book
-
- 12** How long does it take to walk to the bus station from the museum?
- A** five minutes
- B** ten minutes
- C** thirty minutes
- D** thirteen minutes
-
- 13** The Art Bookstore sells a variety of
- A** presents.
- B** healthy food.
- C** designer clothes.
- D** newspapers.

Part 3**Questions 14–19**

- Look at the notes about the Berkshire Half Marathon.
- Some information is missing.
- You will hear a presenter talking on the radio about the race.
- For each question, fill in the missing information in the numbered space.

Berkshire Half Marathon

Date: Sunday 10th **(14)**

Race start time: **(15)**

Place: Rivermead Leisure Complex

Facilities at Rivermead include: Place to leave bags

Free massage

Toilets

(16)

The course is traffic-free and controlled by Thames Valley Police.

Facilities during the course include: Water, sponge and drinks stations

First aid

Public support

Live **(17)**

About the Mini Marathon:

Age group: 10 – 16 year olds

Distance: One mile

First prize: **(18)**

To enter, go to the website or ask for an entry **(19)**

Entries to be received by Friday 8th March

Information taken from Borough Council leaflet.

Part 4

Questions 20–25

- Look at the six statements for this Part.
- You will hear a conversation between a sister, Kate, and a brother, Mark. They are discussing their holiday plans.
- Decide if you think each statement is correct or incorrect.
- If you think it is correct, put a tick [✓] in the box under **A** for **YES**.
If you think it is not correct, put a tick [✓] in the box under **B** for **NO**.

	A YES	B NO
20 They have finished paying for their holiday to Spain.	<input type="checkbox"/>	<input type="checkbox"/>
21 They are both keen to avoid losing money on the holiday booking.	<input type="checkbox"/>	<input type="checkbox"/>
22 Kate would prefer to travel outside Europe.	<input type="checkbox"/>	<input type="checkbox"/>
23 Mark is attracted by the idea of an activity holiday.	<input type="checkbox"/>	<input type="checkbox"/>
24 Mark is happy to only have a few days holiday.	<input type="checkbox"/>	<input type="checkbox"/>
25 Mark agrees to the holiday Kate suggests.	<input type="checkbox"/>	<input type="checkbox"/>

Part 1 General conversation (2–3 minutes)

Ask each other questions in order to find out information about personal details, home town, schools, jobs, family, etc.

Part 2 Simulated situation (2–3 minutes)

Your friend is going to England for a year and you want to buy her a going-away present.

Look at the pictures on page 48.

Talk together about the sort of present you can buy and then decide which one to get her.

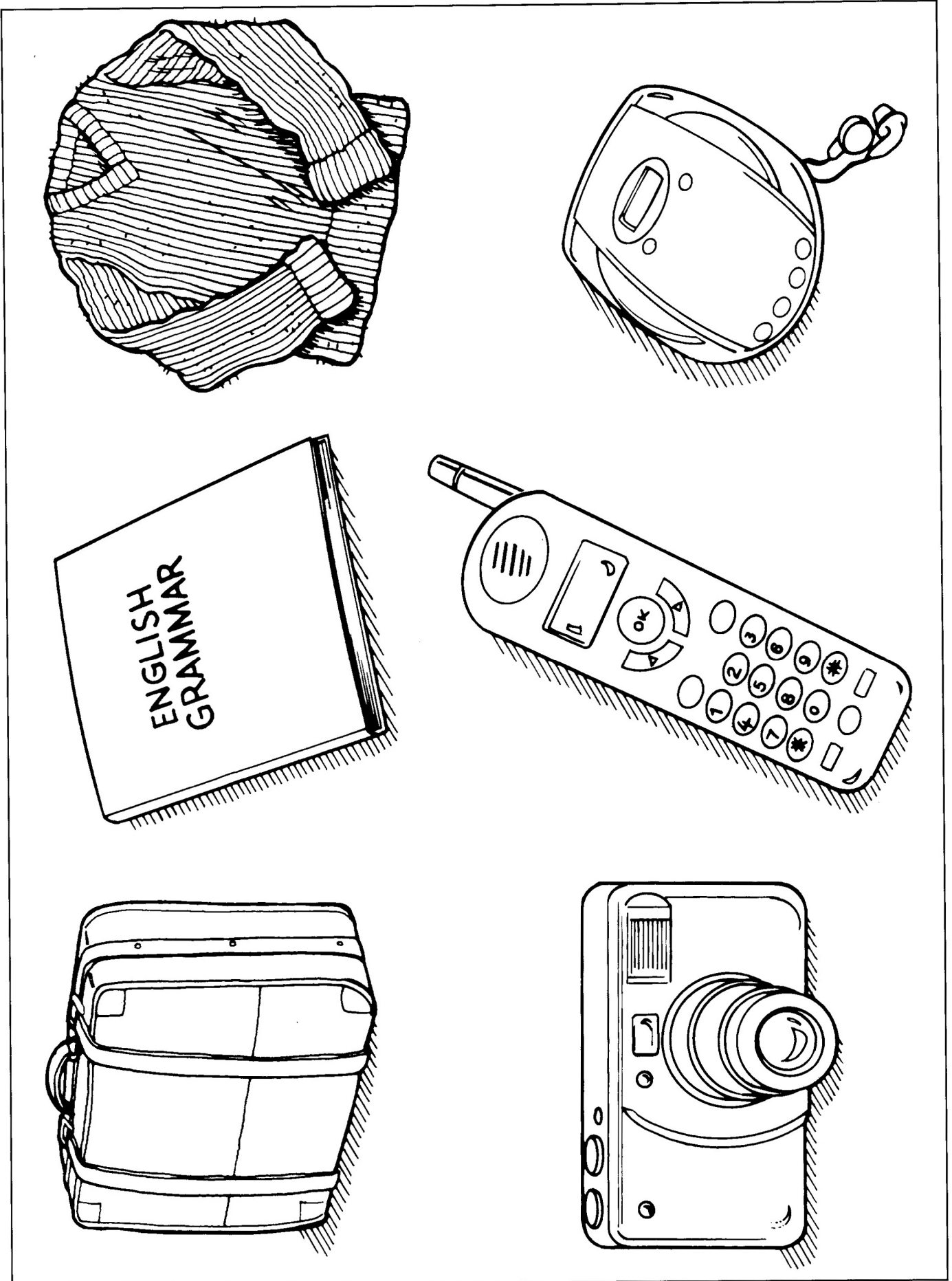
Part 3 Responding to photographs (3 minutes)

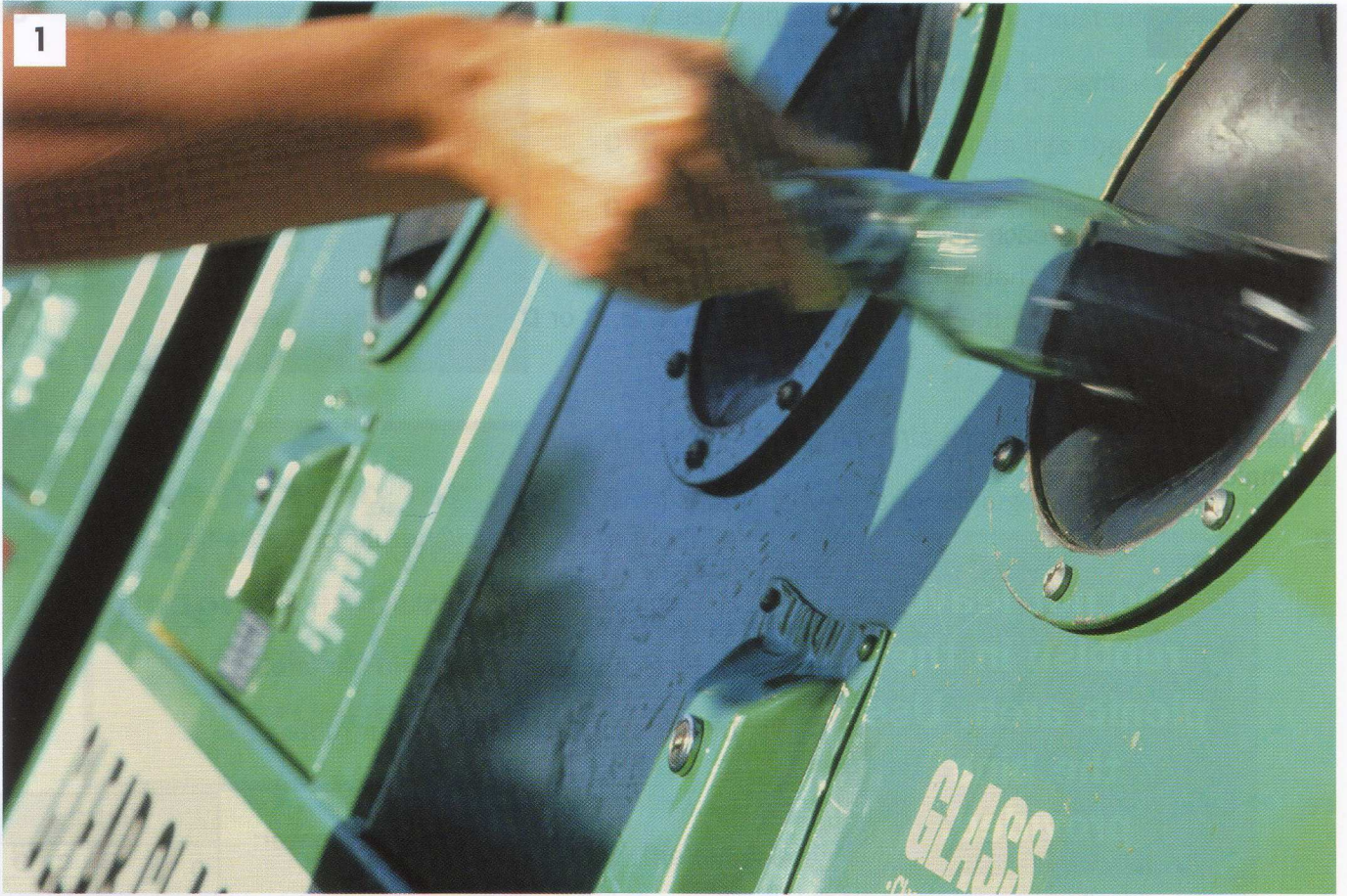
Candidate A should look at photograph 1 on page 49, show it to Candidate B and talk about it.

Candidate B should look at photograph 2 on page 49, show it to Candidate A and talk about it.

Part 4 General conversation based on the photographs in Part 3 (3 minutes)

Talk to each other about what is happening to our environment. Talk about particular problems in your country and discuss what can be done to improve matters.





Reading

Part 1

Questions 1–5

- Look at the sign in each question.
- Someone asks you what it means.
- Mark the letter next to the correct explanation – **A, B, C** or **D** – **on your answer sheet.**

Example:

0



- A** You may not leave your rubbish here at all.
- B** Picnic food is provided here.
- C** Picnics are not allowed in this area.
- D** You should clear away your rubbish.

Example answer:

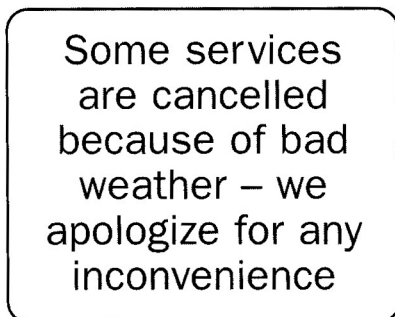
Part 1				
0	<u>A</u>	<u>B</u>	<u>C</u>	<u>D</u>

1



- A** There are three floors in this shop.
- B** The shopping centre has just opened.
- C** *Young Fashions* stays open later now.
- D** This shop has changed its location.

2



- A** All trains are cancelled today.
- B** There is no food service on some trains.
- C** There are fewer trains than usual.
- D** The rail services are getting back to normal.

- 3
- Guests at the hotel are kindly requested not to make a noise after 10 p.m.
- A Guests returning after 10 p.m. must inform the hotel.
B Guests should try to be quiet at night.
C Guests may not invite visitors into the hotel.
D Guests who make any noise will be asked to leave.
- 4
- No parking for visitors at this hospital entrance – unless in an emergency.**
- A People visiting patients should use the other entrance.
B This parking area is for emergency vehicles only.
C There is no parking at this hospital for visitors.
D Visitors may park here if it is essential.
- 5
- Please use our 24-hour telephone information service when the tourist office is closed.*
- A The telephone service is not working right now.
B You can get tourist information at any time.
C Come to the office if you cannot contact us by phone.
D This office is open 24 hours a day.

Part 2

Questions 6–10

- The people below all want to have a day out in the countryside.
- On the opposite page there are descriptions of eight ideas for a day's entertainment.
- Decide which day's entertainment (**letters A–H**) would be the most suitable for each person, couple or family (**numbers 6–10**).
- For each of these numbers mark the correct letter **on your answer sheet**.

6



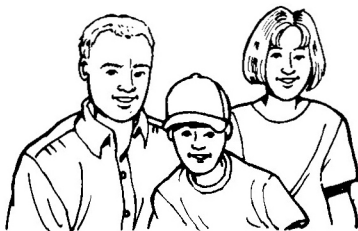
Sarah enjoys walking as a hobby but doesn't like to take it too seriously. She has just bought a book on birds and is keen to go bird watching.

7



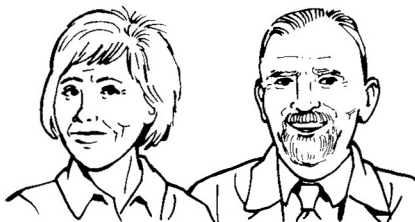
Chris, who is a keen photographer, loves all kinds of animals and enjoys learning about how to look after them. He wants to be a vet one day and is particularly interested in learning to ride.

8



The Grant family like taking part in organised activities which are educational but also fun. None of the family are great walkers.

9



George and Margaret are both interested in plants and flowers. They want to spend the whole day visiting a historic building and wandering around its gardens.

10



Anne likes to join in activities where she can meet people and learn new things. She is interested in gardening and cooking.

A Try something different

Spend the morning collecting local wild flowers and herbs under the expert guidance of one of our specialists. Take them back to the centre and use them to create a delicious meal. Price includes cookery lesson, tea and coffee, and everything you'll need for the meal that you and your group will create.

B Take a walk on the wild side

Are you interested in animals and enjoy walking? We organise guided walks all over the British Isles and provide the opportunity to take a closer look at Britain's woodland animals. But BE WARNED: this is a walk for the experienced!

C Bradmore College

Do you want to get more from your camera this summer? Do you like taking pictures of animals and birds? If the answer is YES to both these questions, then our one-day photography course is just what you need. Bradmore College is in a historic building, with its own gardens and lake – a perfect place for photography!

D Water Wildlife

Enjoy a gentle, planned walk around the largest lake in this part of the country, discovering insects and butterflies and learning more about these and other water wildlife from our guides. Walk for as long or as little as you like. Stop for a picnic and enjoy the chance to swim in the water. Suitable for all ages.

E Heidi's Riding School

Heidi's Riding School offers day courses on which you can learn the basic skills of riding as well as how to care for your horse in general. We have different courses for different ages, so please ring to find out which is best for you.

F Island Exploration

Put on your walking boots and spend the day exploring the island, searching for wild flowers and observing bird life. This is an organised tour and you are advised to book early. Beginner walkers are welcome. Our aim is to have fun.

G Hampdon House

Spend a day wandering around the beautifully furnished rooms of Hampdon House, built in 1843. Enjoy the spectacular gardens and huge greenhouses full of exotic flowers from around the world. Then, rest in our café which sells home-cooked cakes and biscuits.

H Natural History Tour

Join us on this 13 km (8 mile) circular guided walk which will take you through woods, across farms and along the coast. Along the way you will be amazed at how much you'll learn about the world we live in.

Part 3

Questions 11–20

- Look at the statements below about a company called *Theatreworld*.
- Read the text on the opposite page to decide if each statement is correct or incorrect.
- If it is correct, mark **A on your answer sheet**.
- If it is not correct, mark **B on your answer sheet**.

11 *Theatreworld* arranges both theatre and concert breaks.

12 *Theatreworld* is able to arrange accommodation.

13 A group of 20 would only have to pay for 19 people.

14 Family hotels give discounts to all children accompanying adults.

15 The Luxury Programme has tickets for some top shows.

16 *Theatreworld* recommends a cruise as a good way to see London's sights.

17 Cabaret Night combines a show at the theatre with a riverboat ride.

18 In November, Cabaret Night is only available at weekends.

19 The Romantic Evening Cruise boat leaves at 8 o'clock.

20 *Theatreworld* can be contacted at any time.

TAKE YOUR SEAT, THE SHOW IS ABOUT TO BEGIN ...

London is the theatre capital of the world and *Theatreworld* is the best way to arrange your short break. Every night the choice of live performances is fantastic. Whether you want a West End musical, a good drama, a concert, or a night at the opera, *Theatreworld* has the right programme for you. Offering a choice of over 200 hotels and guest-houses, there's something for everyone.

GROUP BOOKINGS

We can help with all group arrangements for rail travel, theatre and restaurant bookings, and hotel reservations. We guarantee a discount of 1 FREE place for every 16 *Theatreworld* customers travelling together.

FAMILY BREAKS

Why not treat the whole family to a magical experience in London? *The Lion King, Buddy, Chicago, Miss Saigon* ... the choice of performances is amazing. Several of our London hotels have family rooms where up to 2 children under 16 can stay free when sharing with 2 adults.

THE LUXURY PROGRAMME

Our Luxury Programme offers you reserved top price seats for the show of your choice, together with accommodation and breakfast. Choose from over 30 selected London hotels, all in wonderful places, many within minutes' walk of the top shows in town. All you have to do is arrive and let us take care of everything else. It couldn't be simpler!

LONDON – OFFERS AND ATTRACTIONS

We realise no trip to London is complete without some sightseeing and what better way to do that than from a boat on the River Thames? *Theatreworld* is pleased to present the following ideas for those planning a visit to the capital.

CABARET NIGHT

Listen to your favourite songs from the world's most famous musicals while you see the sights of London float by. Combine this with an excellent four-course dinner and dancing, and you have the perfect evening. The cruises run Wednesday to Sunday from April to October and Thursday to Saturday from November to March. Boarding from Westminster Pier at 7.00 p.m. and returning at 10.45 p.m. Cost – only £45 per person.

ROMANTIC EVENING CRUISE

You are invited to board *The Symphony* – a magnificent glass sided ship for a night of fine food, entertainment and dancing beneath the stars and the bridges of London. Cruises depart from Embankment Pier, boarding at 7.30 p.m. for a departure at 8.00 p.m. Return to the Embankment at 10.30 p.m. Cost – from £53 per person.

Whatever you want from a short break in London, contact us now and we'll answer your questions. Our telephone lines are open 7 days a week from 8 a.m. – 11 p.m.

Part 4**Questions 21–25**

- Read the text and questions below.
- For each question, mark the letter next to the correct answer – **A, B, C** or **D** – **on your answer sheet.**

Fishing

I have three children aged eleven, thirteen and sixteen, and also a full-time job working as a manager in a busy restaurant. I like being busy and I love being with people, but from time to time I like to escape and be completely on my own.

Two years ago, I found the perfect way to relax. One day, I picked up a fishing magazine in a doctor's waiting room and started going through it. I saw pictures of beautiful countryside, sunlight on water and relaxed-looking people. I decided I would try it for myself.

These days I go fishing about once a month. I love sitting completely still by the lake waiting for the fish to bite. You can't let the fish know you're there, so you mustn't make any sound at all. I think so much about what I'm doing that I forget everything else. I forget the busy morning rush to school and work, the traffic, the housework, the stress and the noise at the restaurant.

Last year, I went on a fishing holiday with four other women. It was fun fishing by day and going out at night but I wouldn't do it again. I prefer to be on my own. That's the point of fishing, no one asks you questions or wants anything of you, and you get lost in your own thoughts. It's just me, the fish and the water.

21 What is the writer's main aim in writing the text?

- A** to recommend places to visit
- B** to suggest different leisure activities
- C** to describe her experience of fishing
- D** to talk about different fishing methods

22 The writer

- A** works with her three children.
- B** works in the food industry.
- C** works part time.
- D** works on her own.

- 23** Why did the writer take up fishing?
- A** The restaurant she works at needed the fish.
 - B** She thought it would be a good way to relax.
 - C** She wanted some time away with her family.
 - D** Her doctor advised her to.

- 24** Why does the writer sit so silently when she is fishing?
- A** She concentrates on her problems.
 - B** She doesn't want to disturb other people.
 - C** She listens to the sounds around her.
 - D** She doesn't want the fish to notice her.

- 25** Which postcard did the writer send to her husband when she was on holiday?

<p>A</p> <p><i>Hi Paul!</i> <i>Can't wait to come home.</i> <i>I'm not enjoying myself</i> <i>and I miss you all so</i> <i>much! The weather's</i> <i>really bad! See you</i> <i>soon.</i> <i>Love Jill.</i></p> <div style="border-left: 1px solid black; padding-left: 10px; margin-left: 10px;"> <div style="border: 1px solid black; width: 40px; height: 40px; margin-bottom: 5px;"></div> <hr style="border: 0; border-top: 1px solid black; margin-bottom: 5px;"/> <hr style="border: 0; border-top: 1px solid black; margin-bottom: 5px;"/> <hr style="border: 0; border-top: 1px solid black; margin-bottom: 5px;"/> <hr style="border: 0; border-top: 1px solid black; margin-bottom: 5px;"/> </div>	<p>C</p> <p><i>Hi Paul!</i> <i>I'm having a great time,</i> <i>but next time I'll</i> <i>probably come on my own.</i> <i>I miss my quiet times!</i> <i>See you soon.</i> <i>Love Jill.</i></p> <div style="border-left: 1px solid black; padding-left: 10px; margin-left: 10px;"> <div style="border: 1px solid black; width: 40px; height: 40px; margin-bottom: 5px;"></div> <hr style="border: 0; border-top: 1px solid black; margin-bottom: 5px;"/> <hr style="border: 0; border-top: 1px solid black; margin-bottom: 5px;"/> <hr style="border: 0; border-top: 1px solid black; margin-bottom: 5px;"/> <hr style="border: 0; border-top: 1px solid black; margin-bottom: 5px;"/> </div>
<p>B</p> <p><i>Hi Paul!</i> <i>This is great fun. I</i> <i>wish I went fishing with</i> <i>friends more often. There</i> <i>are plenty of fish. See</i> <i>you soon.</i> <i>Love Jill.</i></p> <div style="border-left: 1px solid black; padding-left: 10px; margin-left: 10px;"> <div style="border: 1px solid black; width: 40px; height: 40px; margin-bottom: 5px;"></div> <hr style="border: 0; border-top: 1px solid black; margin-bottom: 5px;"/> <hr style="border: 0; border-top: 1px solid black; margin-bottom: 5px;"/> <hr style="border: 0; border-top: 1px solid black; margin-bottom: 5px;"/> <hr style="border: 0; border-top: 1px solid black; margin-bottom: 5px;"/> </div>	<p>D</p> <p><i>Hi Paul!</i> <i>I'll be home two days</i> <i>early. There are no fish</i> <i>and it's no fun! See you</i> <i>soon.</i> <i>Love Jill.</i></p> <div style="border-left: 1px solid black; padding-left: 10px; margin-left: 10px;"> <div style="border: 1px solid black; width: 40px; height: 40px; margin-bottom: 5px;"></div> <hr style="border: 0; border-top: 1px solid black; margin-bottom: 5px;"/> <hr style="border: 0; border-top: 1px solid black; margin-bottom: 5px;"/> <hr style="border: 0; border-top: 1px solid black; margin-bottom: 5px;"/> <hr style="border: 0; border-top: 1px solid black; margin-bottom: 5px;"/> </div>

Part 5

Questions 26–35

- Read the passage below and choose the correct word for each space.
- For each question, mark the letter next to the correct word – **A, B, C** or **D** – **on your answer sheet.**

Example answer:

Part 5				
0	A	B	C	D

ARE YOU FEELING SAD THIS WINTER?

Most people feel a bit fed up and (0) when the weather changes. This is perfectly normal. (26) likes chilly days and dark winter evenings. For those with Seasonal Affective Disorder (or SAD) (27), the feelings are much worse. These people can start to feel bad as (28) as September, and they (29) not feel any better until spring. People (30) have this problem feel terribly depressed and very tired. (31) the winter months they feel the (32) to eat sweet things and other food such as bread and potatoes.

Sunlight changes the balance of the brain’s chemicals and SAD is caused (33) not getting enough light. These (34), there are ways to help SAD sufferers. You can buy a ‘light box’ which copies daylight, but you have to sit in front of it for about two hours every day to (35)

- 0 **A** miserable **B** excited **C** worried **D** nervous
- 26 **A** None **B** Anyone **C** Nobody **D** Nothing
- 27 **A** ever **B** already **D** however **D** too
- 28 **A** near **B** early **C** close **D** far
- 29 **A** must **B** may **C** should **D** need
- 30 **A** who **B** which **C** whom **D** where
- 31 **A** For **B** On **C** Toward **D** During
- 32 **A** way **B** need **C** want **D** wish
- 33 **A** to **B** by **C** of **D** in
- 34 **A** moments **B** times **C** ages **D** days
- 35 **A** become **B** beat **C** benefit **D** begin

Writing

Part 1

Questions 1–5

- Here are some sentences about transport.
- For each question, finish the second sentence so that it means the same as the first.
- The second sentence is started for you. **Write only the missing words on your answer sheet.**
- You may use this page for any rough work.

Example: Shall we go by train to the airport?

What about *going by train to the airport?*

1 Travelling by coach is cheaper than travelling by train.

It is more **by coach.**

2 Seats must be booked on the coach.

You must

3 I prefer driving to travelling by coach.

I like driving **by coach.**

4 I find long car journeys boring.

I get **car journeys.**

5 Being tired makes driving dangerous.

Tiredness makes it

Part 2

Questions 6–15

- You are studying in Britain and your local sports and leisure centre is planning to improve its facilities.
- You are a member of the centre and have been given a questionnaire to complete.
- Look at the questionnaire and answer each question.
- **Write your answers on your answer sheet.**
- You may use this page for any rough work.

LANSDOWN SPORTS AND LEISURE CENTRE
114 Ferndown Road, Lansdown, LN6 5TR, UK.

QUESTIONNAIRE

Full name: (6)

Address: (7)

Sex: (8)

Date of birth (day/month/year): (9)

When do you usually visit the centre? (10)

How do you get to the centre? (11)

Which sports facilities do you use most frequently? (12)

.....

How often do you visit the restaurant? (13)

.....

What new facilities would you like to see at the centre? (14)

.....

How do you think the existing facilities could be improved? (15)

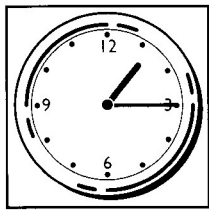
.....

Part 1

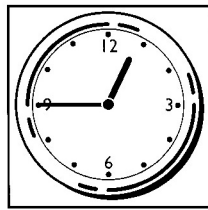
Questions 1–7

- There are seven questions in this Part.
- For each question there are four pictures and a short recording.
- You will hear each recording twice.
- For each question, look at the pictures and listen to the recording.
- Choose the correct picture and put a tick [✓] in the box below it.

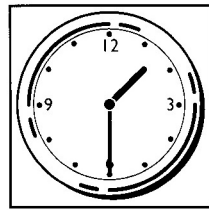
Example: What time does the film start?



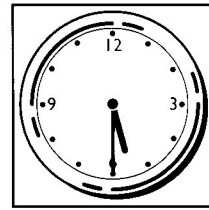
A



B



C



D

1 Why didn't the woman go to the party?



A



B

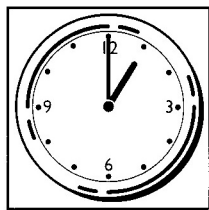


C

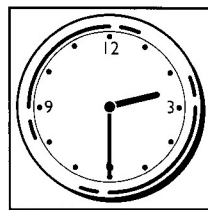


D

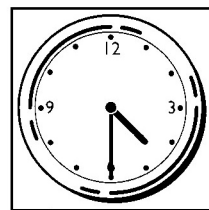
2 What time is the coach leaving?



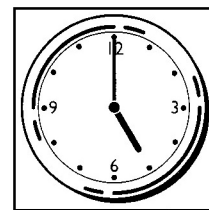
A



B



C



D

3 Why is Sue at the doctor's?



A



B



C



D

4 What happened after the men robbed the post office?



A



B



C



D

5 What will Amy do tomorrow evening?



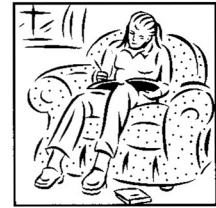
A



B

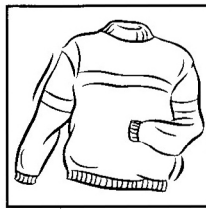


C

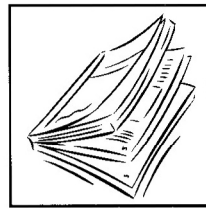


D

6 What is Bill getting for his birthday?



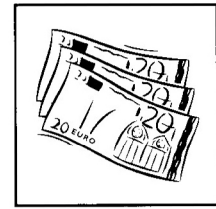
A



B



C



D

7 Where are they going to eat?



A



B



C



D

Part 2

Questions 8–13

- Look at the questions for this Part.
- You will hear a radio presenter talking about *The Jazz Club*.
- Put a tick [✓] in the correct box for each question.

- 8** What makes the club different from other clubs in the area?
- A** It has live entertainment.
B There are regular comedy shows.
C There is a restaurant.
D It only plays jazz.
- 9** When can you hear live music at the club?
- A** on Thursdays and Sundays
B once a month
C four times a week
D twice a month
- 10** On Mondays, people who aren't eating may arrive from
- A** 7.30 p.m.
B 8.00 p.m.
C 9.00 p.m.
D 10.00 p.m.
- 11** What is one of the benefits of membership?
- A** free use of club in the daytime
B free entry for you and one other person
C 15% discount off food
D free group bookings
- 12** In December there will be
- A** fewer bands playing at the club.
B a change to when live music is played.
C more facilities available at the club.
D a difference in the kind of band playing.
- 13** When is entrance always free?
- A** on Tuesdays
B on Saturdays
C on Wednesdays
D on Sundays

Part 3**Questions 14–19**

- Look at the notes about things to do on the Isle of Wight.
- Some information is missing.
- You will hear a presenter talking on the radio about the different activities.
- For each question, fill in the missing information in the numbered space.

Days out on the Isle of Wight

Coves Week

Dates: 4th – (14) August

The America's Cup Jubilee

The first America's Cup Challenge was in (15)

Osborne House Garden Show

Dates: 28th – 29th (16)

Exhibitions from:

Chelsea Flower Show

Hampton Court Flower Show

Local garden centres and (17)

Ventnor Botanic Gardens

Visitor centre includes: exhibition area

gift shop

café

(18)

Robin Hill Country Park

Cost: (19) £ per car and four people

Part 4

Questions 20–25

- Look at the six statements for this Part.
- You will hear a conversation between a woman, Lisa, and a man, Mike. They are discussing sport.
- Decide if you think each statement is correct or incorrect.
- If you think it is correct, put a tick [✓] in the box under **A** for **YES**.
If you think it is not correct, put a tick [✓] in the box under **B** for **NO**.

	A YES	B NO
20 Lisa has missed most of her aerobic classes.	<input type="checkbox"/>	<input type="checkbox"/>
21 Lisa paid in advance for her aerobic lessons.	<input type="checkbox"/>	<input type="checkbox"/>
22 Mike suggests Lisa starts another course of aerobics.	<input type="checkbox"/>	<input type="checkbox"/>
23 Lisa thinks she would be able to go jogging before work.	<input type="checkbox"/>	<input type="checkbox"/>
24 Mike is keen on exercising with other people.	<input type="checkbox"/>	<input type="checkbox"/>
25 Mike is happy to try a game of tennis.	<input type="checkbox"/>	<input type="checkbox"/>

Part 1 General conversation (2–3 minutes)

Ask each other questions in order to find out information about personal details, home town, schools, jobs, family, etc.

Part 2 Simulated situation (2–3 minutes)

You are going to travel around Europe with a friend and you are deciding what to take with you.

Look at the pictures on page 68.

Talk together about which of the things you should take with you and then decide on the most important things.

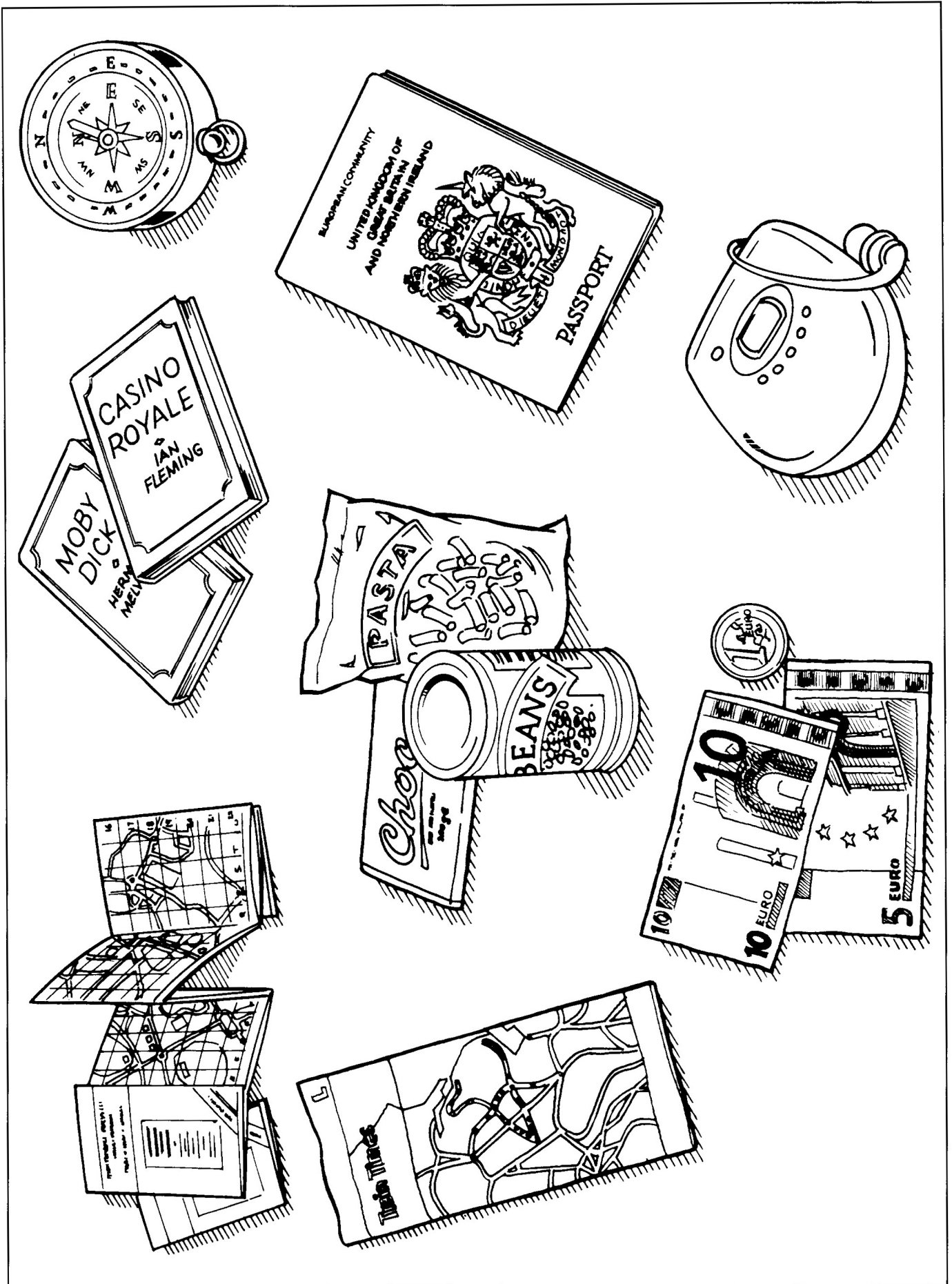
Part 3 Responding to photographs (3 minutes)

Candidate A should look at photograph 1 on page 69, show it to Candidate B and talk about it.

Candidate B should look at photograph 2 on page 69, show it to Candidate A and talk about it.

Part 4 Conversation based on photographs in Part 3 (3 minutes)

Talk to each other about the kind of clothes you like to wear and the importance of fashion.





Reading

Part 1

Questions 1–5

- Look at the sign in each question.
- Someone asks you what it means.
- Mark the letter next to the correct explanation – **A, B, C** or **D** – **on your answer sheet.**

Example:

0



- A You may not leave your rubbish here at all.
- B Picnic food is provided here.
- C Picnics are not allowed in this area.
- D You should clear away your rubbish.

Example answer:

Part 1				
0	<u>A</u>	<input type="checkbox"/>	<input type="checkbox"/>	<input type="checkbox"/>

1



Please be quiet when exams are in progress

- A Do not enter this area at any time.
- B Do not make a noise while exams are taking place.
- C Students must not speak during exams.
- D Exams are not in progress at the moment.

2



- A Swimmers can only use the diving pool.
- B One of the pools is closed today.
- C The main pool is being repaired.
- D Nobody can swim here today.

3

Please inform the
dentist's receptionist
about any changes in
your details

- A The receptionist will change your details regularly.
- B Give your details to the receptionist when you arrive.
- C You will receive information about your details when they change.
- D The receptionist needs to know if your details change.

4

**CHILDREN UNDER
12 CANNOT GO ON
THIS RIDE UNLESS
ACCOMPANIED BY
AN ADULT**

- A No children under 12 can go on this ride.
- B Only 12 people can go on this ride at any time.
- C Children under 12 can go on this ride with an adult.
- D All children must be with an adult on this ride.

5

Take a ticket
when you enter
the car park
Pay at end
of stay

- A You are allowed to park here for free.
- B You need to pay before you park.
- C You need a ticket to use this car park.
- D You should get a ticket when you leave.

Part 2

Questions 6–10

- The people below want to do an evening activity.
- On the opposite page there are descriptions of eight ideas for evening activities.
- Decide which activity (**letters A–H**) would be the most suitable for each person (**numbers 6–10**).
- For each of these numbers mark the correct letter **on your answer sheet**.

6



Mandy works until 8 p.m. every evening except for Wednesdays when she works until 10 p.m. She would like to join some kind of exercise class twice a week.

7



Simon plays the guitar in a band. He has always played rock music but has never had lessons. He would now like to learn how to play classical music.

8



Jim wants to meet people. He doesn't want to do a sport and he's not interested in languages. He'd like to do something educational.

9



Liz enjoys art and literature. She's not a very active person and doesn't drive. She enjoys talking to people and doesn't want to do anything too academic.

10



Kate would like to take some exercise but doesn't want to join a regular class. She would like to make new friends through a sporting activity.

- A** Getting fit doesn't have to be dull. Work out to the sound of your favourite music with a group of keen, active people and top trainers. Classes on Mondays and Wednesdays 7 p.m. – 8 p.m.
- B** Study French at all levels with qualified teachers. We have regular French cultural social events both on site and at other local places of interest, including restaurant and cinema trips. We also hold a yearly French weekend away. Contact us for details of class times.
- C** We'd like to set up a team of keen volleyball players for fun matches with other leisure centres. Don't worry if you've never played, we'll show you how. Sessions: Wednesdays and Fridays 7.30 p.m. – 8.30 p.m. Lots of time off the court for weekend social events too.
- D** Study classical music – learn about the history of classical music and about many famous composers. Enjoy frequent visits to concerts and meals afterwards to discuss your ideas. Classes take place on Tuesdays 7 p.m. to 9 p.m. Visits to concerts are usually arranged for weekends.
- E** If you want to try something different why not have a go at swimming pool aerobics? Our classes are on Tuesdays and Thursdays at 8.30 p.m. – 9.00 p.m. Swimming pool aerobics is an excellent and enjoyable way to keep fit and is recommended for people of all ages.
- F** Join our friendly walking group for walks in the countryside. We are a fairly experienced crowd, so please make sure you have the right equipment and the right level of fitness. We don't want to leave you behind! Walks arranged every other weekend.
- G** One to one teaching – piano, violin, guitar, trumpet, etc. Take the opportunity to practise basic skills and then move on to more difficult classical pieces. Reasonable prices. Hours are arranged with individual tutors.
- H** Join our reading group for relaxed discussions. All you have to do is read a book a week and be prepared to invite a group of friendly people into your home for a chat about books. Every Monday night.

Part 3

Questions 11–20

- Look at the statements below about Spanish mini-cruises.
- Read the text on the opposite page to decide if each statement is correct or incorrect.
- If it is correct, mark **A on your answer sheet**.
- If it is not correct, mark **B on your answer sheet**.

- 11** The mini-cruise goes to southern Spain.
- 12** There is an opportunity to watch a film on the ferry.
- 13** There is a choice of two types of cabins on a *5-Star Celebration* Cruise.
- 14** Only breakfast is included in the price of a *5-Star Celebration* Cruise.
- 15** Entertainment is only arranged on some evenings.
- 16** The *Watch Out for the Dolphins* cruise is only available twice a year.
- 17** The *Watch Out for the Dolphins* cruise includes a visit to a research centre.
- 18** Passengers on the *Let's Salsa* cruise join in the dancing.
- 19** Some cruises include sightseeing visits on land.
- 20** Accommodation costs are for two people in each room.

P&O Portsmouth Spanish MINI-CRUISES

Get the maximum enjoyment from a mini-cruise on board
The Pride of Bilbao – one of the UK's most comfortable cruise ferries.

Mini-cruises

Take a mini-cruise from Portsmouth to Santurtzi, near Bilbao in northern Spain, and enjoy the ferry's superb facilities. Relax with a drink in the bar. Go to the pool or the gym. Watch the latest movie on the big screen or try your luck in the casino. And don't forget the restaurants. There's a range of healthy and delicious meals for all the family to choose from.

5-Star Celebration

If you're celebrating something special, why not choose the 5-Star Celebration Cruise? This costs £134 for a Window cabin and £184 for a Club cabin. With this kind of cruise you'll get a choice of full English or Continental breakfasts every morning and a three-course dinner each evening in either the Horizon Carvery or the Brasserie.

No first class cruise would be complete without live entertainment every night. Our Cruise Director and his team will keep you guessing with quizzes and exciting game shows. There's also a West End style spectacular for you to enjoy. *Hooray for Hollywood* contains music and dance from some of the greatest movies ever made. That's what we call entertainment!

SPECIAL CRUISES

Throughout the season we have a programme of cruises with special entertainment.
Please see below for details:

Watch Out for the Dolphins

3 July and 2 October

Enjoy the excitement as your ship races with the dolphins. Spot giant whales and rare and beautiful birds on our special whale and dolphin watching cruises. This is your chance to discover amazing wildlife, from the English Channel to the Bay of Biscay. Specialists from the Biscay Dolphin Research Programme will be on hand to answer your questions and help you spot these fascinating creatures.

Let's Salsa!

13 October

Enjoy the music of Latin America – Salsa, Merengue, Afro-Cuban and sit back and watch some of Latin America's finest musicians and dancers.

For further details of other special cruises, day trips, party nights or special guided excursions to locations on shore, contact our website or see your travel agent.

Prices

Adults from £69 per person
Window cabins from £79 per person
Club cabins from £119 per person
Children (accompanying two adults) – from £19 per person

All prices based on two adults sharing.

Part 4**Questions 21 – 25**

- Read the text and questions below.
- For each question, mark the letter next to the correct answer – **A, B, C** or **D** – on your answer sheet.

Job Interviews

Many people have unsuccessful interviews because they aren't fully prepared. This may be because they haven't done their research properly and can't answer questions about the company they are hoping to join. Or it may be because they are nervous and don't perform well. Going for a job interview is never easy whether it's for a full-time career, or a part-time job during the holidays. However, it is possible to learn how to do well in an interview simply by following a few basic rules.

Firstly, find out as much as you can about the company or the organisation. Write notes about the job you are trying to get and make a list of questions you can ask. Then make sure you know exactly when and where the interview is. Look up the location on a map. Find out about bus and train timetables if necessary and try to predict exactly how long the journey will take. If you are really worried, make the journey a few days before your interview so you can find out.

Another important rule is to plan what you are going to wear well in advance. Make sure it's clean, it fits and it's comfortable! Clean your shoes and sort out what you are taking in your bag or briefcase. All you should do the night before is have a quick look at your notes. Go to bed early so you can get up in good time and calmly get yourself ready. When you walk into the interview room look directly at your interviewers and shake their hands. Finally, be calm and relaxed, and speak clearly.

- 21** What is the writer's main aim in writing the text?
- A** to describe what to say in an interview
 - B** to give advice on having a successful interview
 - C** to talk about a particular interview
 - D** to complain about how difficult interviews are
- 22** Which of the following does the text suggest you should do if you want to be successful in an interview?
- A** avoid answering questions
 - B** avoid being nervous
 - C** not research the company
 - D** not prepare for the interview

23 Why does the writer suggest visiting the interview site before the interview?

- A to get information about the company
- B to find out how good the public transport is
- C to find out the length of the journey
- D to practise using a map

24 What does the writer advise doing the night before?

- A prepare your interview clothes
- B make a few more notes
- C organise what you are going to take
- D read through what you have written previously

25 Which would be most appropriate as another heading for this article?

A

**How to get
the best
job for you**

C

What to look for in
people when you
interview them

B

**Learn the art of
having a good
interview**

D

*How to get through
an interview when
you aren't prepared*

Part 5

Questions 26–35

- Read the passage below and choose the correct word for each space.
- For each question, mark the letter next to the correct word – **A, B, C** or **D** – **on your answer sheet.**

Example answer:

Part 5				
0	A	B	C	D

LOSE THAT FAT IN WINTER!!

People generally eat (0) in winter than in summer, but (26) you want to lose weight and stop feeling tired all the time, (27) isn't enough. You also need to (28) some simple exercise. The first thing you can do is to pull on a jumper and get outside. Walking during winter is better than walking in summer because you can go on for (29) in cold temperatures. Aim for a speed (30) you can achieve comfortably.

Another easy way to (31) fit is by following an exercise video. There's no need to (32) time travelling to and from a class, you simply switch (33) the video and work out at home. Try renting a few videos before buying one, then you can choose one that's (34) for you. Something (35) you can do at home is walking up and down stairs. Five to ten minutes of this is excellent exercise.

- | | | | | |
|-----------|------------------|------------------|------------------|-------------------|
| 0 | A more | B most | C much | D many |
| 26 | A except | B whether | C if | D unless |
| 27 | A dieting | B feeding | C eating | D drinking |
| 28 | A make | B do | C be | D play |
| 29 | A bigger | B higher | C larger | D longer |
| 30 | A what | B that | C whose | D who |
| 31 | A find | B put | C keep | D hold |
| 32 | A spend | B have | C use | D bring |
| 33 | A up | B in | C over | D on |
| 34 | A exact | B right | C true | D proper |
| 35 | A too | B also | C further | D else |

Writing

Part 1

Questions 1–5

- Here are some sentences about the weather.
- For each question, finish the second sentence so that it means the same as the first.
- The second sentence is started for you. **Write only the missing words on your answer sheet.**
- You may use this page for any rough work.

Example: Who does this umbrella belong to?

Whose *umbrella is this?*

1 It's too cold to go to the beach.

It isn't **to the beach.**

2 James asked Lisa if it was raining.

James said to Lisa '..... ?'

3 The tree was blown down by the wind.

The wind

4 Last month it rained a lot.

Last month there

5 Last October wasn't as wet as this October.

This October **last October.**

Part 2

Questions 6–15

- You use your local shopping centre regularly.
- You have been given a survey to complete.
- Look at the survey and answer each question.
- **Write your answers on your answer sheet.**
- You may use this page for any rough work.

DAVISON SHOPPING CENTRE
Queens Drive, Newcastle, NC7 4BA, UK.

SURVEY

Sex: (6)

Age: (7)

Marital Status: (8)

Occupation: (9)

How often do you visit the shopping centre? (10)

.....

How do you usually travel to the shopping centre? (11)

What time of day do you usually come? (12)

.....

What kind of shop do you visit most? (13)

.....

What do you think of the food in the restaurant? (14)

.....

Please make three suggestions for how the shopping centre could be improved: (15)

.....

.....

Part 3

Question 16

- An English-speaking friend is coming to stay with you for a week soon.
- Now you are writing to tell your friend what you have planned for the visit.
- Explain how excited you are, describe what you are planning to do and suggest what clothes your friend should bring.
- **Finish the letter on your answer sheet, using about 100 words.**

NOTES

Dear

What a lovely surprise you gave me on my birthday!

.....

.....

.....

.....

.....

.....

.....

.....

.....

.....

.....

.....

.....

.....

.....

.....

.....

.....

.....

.....

.....

.....

.....

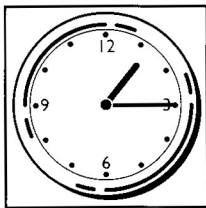
Remember, in the PET you must write your answers on the separate answer sheet.

Part 1

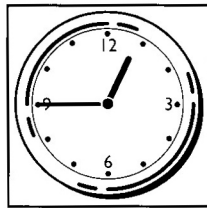
Questions 1–7

- There are seven questions in this Part.
- For each question there are four pictures and a short recording.
- You will hear each recording twice.
- For each question, look at the pictures and listen to the recording.
- Choose the correct picture and put a tick [✓] in the box below it.

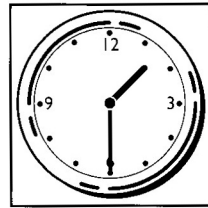
Example: What time does the film start?



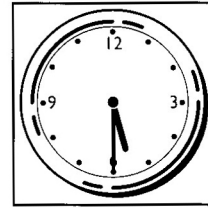
A



B

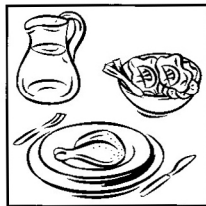


C

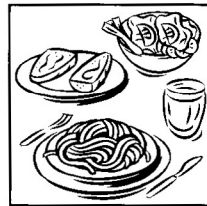


D

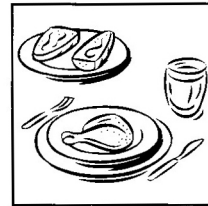
1 Which meal did the woman order?



A



B



C



D

2 Why have the trains been cancelled?



A



B



C



D

3 What does the thief look like?



A



B



C



D

4 Which room is available?



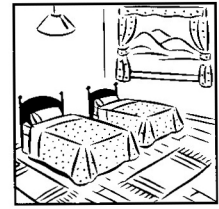
A



B



C



D

5 What did they do last night?



A



B

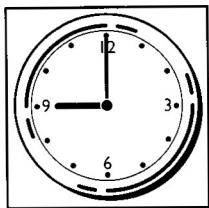


C

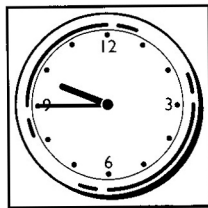


D

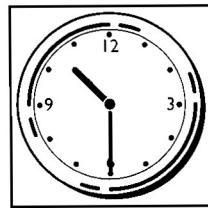
6 What time does the exam end?



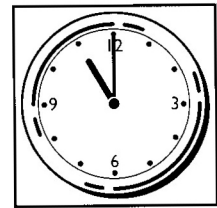
A



B

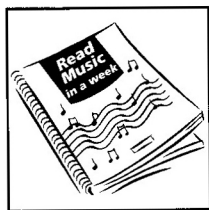


C

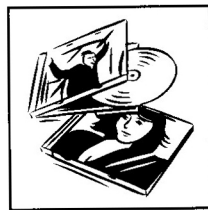


D

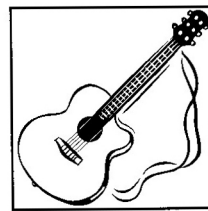
7 What does the woman buy?



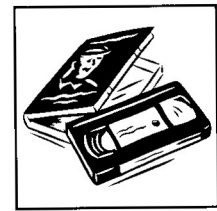
A



B



C



D

Part 2

Questions 8–13

- Look at the questions for this Part.
- You will hear a tour guide talking to a group of visitors to Hatfield House.
- Put a tick [✓] in the correct box for each question.

- 8** The visitors are
- A** all staying in nearby accommodation.
- B** mostly from different parts of England.
- C** all visiting Hatfield House for the first time.
- D** a variety of nationalities.
- 9** The visitors have already
- A** been on a tour of the Great Park.
- B** seen something of the Great Park.
- C** been for a drive around the Great Park.
- D** had a tour of part of the building.
- 10** Many of the plants in the gardens that date back to the 17th century were
- A** already popular in England.
- B** brought from other countries.
- C** discovered by Robert Cecil.
- D** later taken to Europe.
- 11** The tour is delayed because
- A** the group is waiting for some people to join them.
- B** the tour leader was late arriving.
- C** another group began late.
- D** all the visitors were given the wrong time to arrive.
- 12** Guided tours of the house take place
- A** twice a week.
- B** at weekends only.
- C** in the winter months only.
- D** on most weekdays.
- 13** The tour starts
- A** in a room on the ground floor.
- B** at the bottom of the staircase.
- C** in the gardens of the house.
- D** in an art gallery.

Information taken from *Hatfield House* leaflet.

Part 3**Questions 14–19**

- Look at the notes about a school book fair.
- Some information is missing.
- You will hear a teacher talking at a parents' meeting about the annual book fair.
- For each question, fill in the missing information in the numbered space.

St Michael's School Book Fair

The new company should provide a greater **(14)** of books for the Fair.

The school will have a total of **(15)** books to sell.

The school gets one free book for every **(16)** books it sells.

Money made for the school at the book fair is spent on the **(17)**

Orders sent to school must be paid for by **(18)**

Opening Times:

Tuesday 8th and Wednesday 9th of **(19)** between 8.30a.m. and 2.30p.m.

Part 4

Questions 20–25

- Look at the six statements for this Part.
- You will hear a conversation between a wife, Maria and a husband, Georgio. They are discussing plans for the following evening.
- Decide if you think each statement is correct or incorrect.
- If you think it is correct, put a tick [✓] in the box under **A** for **YES**.
If you think it is not correct, put a tick [✓] in the box under **B** for **NO**.

	A YES	B NO
20 Maria thinks Roberto eats meat.	<input type="checkbox"/>	<input type="checkbox"/>
21 Maria and Georgio both cook fish well.	<input type="checkbox"/>	<input type="checkbox"/>
22 Maria is going to cook the chicken.	<input type="checkbox"/>	<input type="checkbox"/>
23 Georgio is worried about doing something wrong.	<input type="checkbox"/>	<input type="checkbox"/>
24 Maria thinks Georgio should try something new.	<input type="checkbox"/>	<input type="checkbox"/>
25 Maria wants to join in the shopping.	<input type="checkbox"/>	<input type="checkbox"/>

Part 1 General conversation (2–3 minutes)

Ask each other questions in order to find out information about personal details, home town, schools, jobs, family, etc.

Part 2 Simulated situation (2–3 minutes)

You and a friend are planning to go away on a week's holiday.

Look at the pictures on page 88.

Talk together about where you would like to go and what you would like to do.

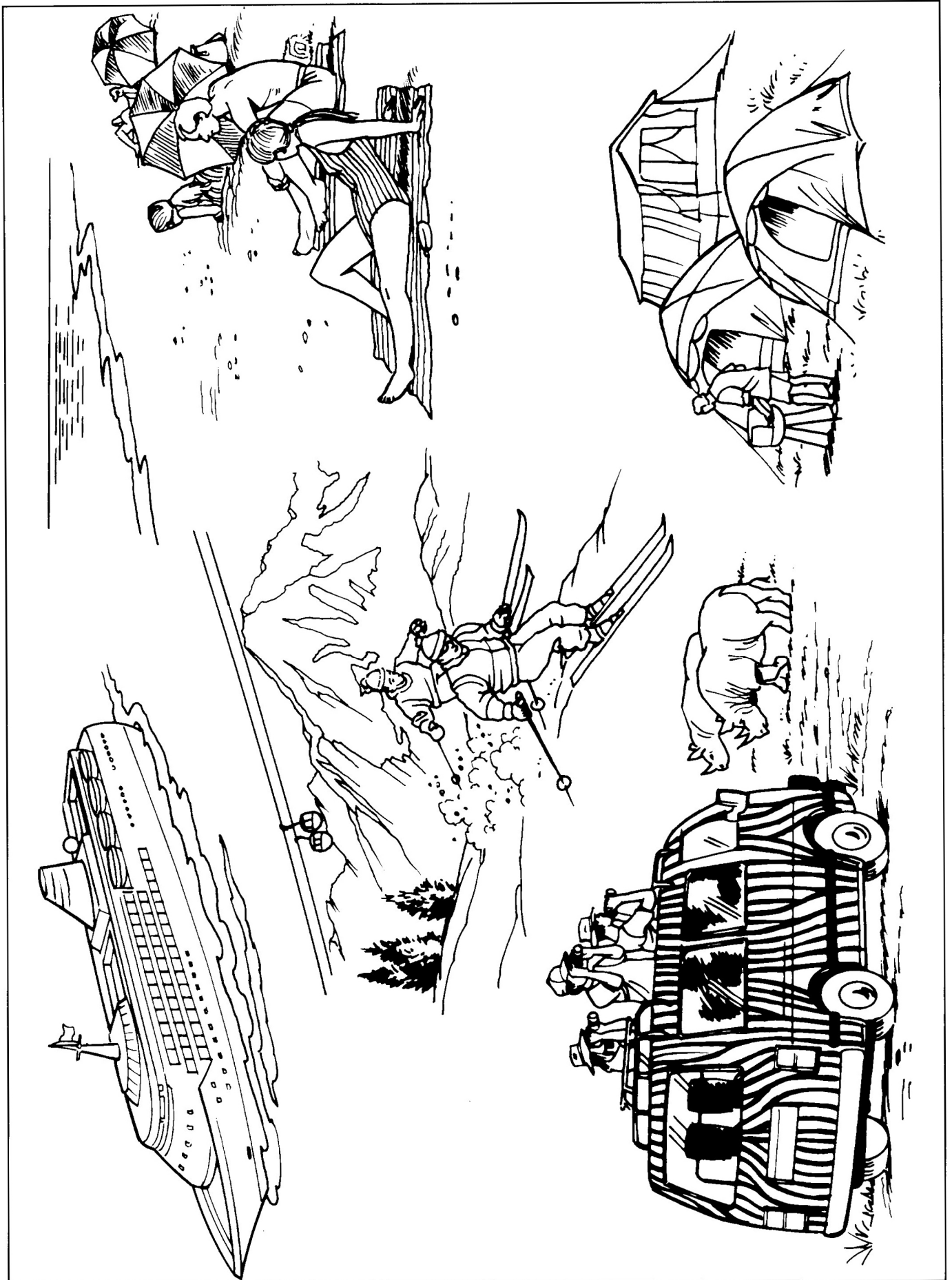
Part 3 Responding to photographs (3 minutes)

Candidate A should look at photograph 1 on page 89, show it to Candidate B and talk about it.

Candidate B should look at photograph 2 on page 89, show it to Candidate A and talk about it.

Part 4 General conversation based on the photographs in Part 3 (3 minutes)

Talk to each other about the different ways you can learn about what is happening in the world and say which way you prefer.







UNIVERSITY of CAMBRIDGE
Local Examinations Syndicate

Blank space for candidate information.

Candidate Name

If not already printed, write name in CAPITALS and complete the Candidate No. grid (in pencil).

Candidate's signature

Examination Title

Centre

Supervisor:

If the candidate is ABSENT or has WITHDRAWN shade here

Centre No.

Candidate No.

Examination Details

0	0	0	0
1	1	1	1
2	2	2	2
3	3	3	3
4	4	4	4
5	5	5	5
6	6	6	6
7	7	7	7
8	8	8	8
9	9	9	9

SAMPLE

PET Reading and Writing - Answer Sheet 1

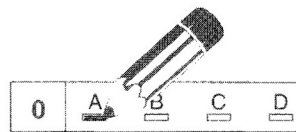
Reading

Use a pencil.

Mark one letter for each question.

Example:

If you think A is the right answer to the question, mark your answer sheet like this:



Rub out any answer you want to change, with an eraser.

Part 1				Part 2				Part 3		Part 4				Part 5												
1	A	B	C	D	6	A	B	C	D	E	F	G	H	11	A	B	21	A	B	C	D	26	A	B	C	D
2	A	B	C	D	7	A	B	C	D	E	F	G	H	12	A	B	22	A	B	C	D	27	A	B	C	D
3	A	B	C	D	8	A	B	C	D	E	F	G	H	13	A	B	23	A	B	C	D	28	A	B	C	D
4	A	B	C	D	9	A	B	C	D	E	F	G	H	14	A	B	24	A	B	C	D	29	A	B	C	D
5	A	B	C	D	10	A	B	C	D	E	F	G	H	15	A	B	25	A	B	C	D	30	A	B	C	D
														16	A	B						31	A	B	C	D
														17	A	B						32	A	B	C	D
														18	A	B						33	A	B	C	D
														19	A	B						34	A	B	C	D
														20	A	B						35	A	B	C	D

Continue on the other side of this sheet →

Writing (Parts 1 and 2)

Write your answer clearly in the space provided.

Part 1: Write your answers below.		Do not write here
1		1
2		2
3		3
4		4
5		5

Part 2: Write your answers below.		Do not write here
6		6
7		7
8		8
9		9
10		10
11		11
12		12
13		13
14		14
15		15

Put your answer to Writing Part 3 on Answer Sheet 2 →

SAMPLE

Part 3: Write your answer in the box below.

Handwriting practice area with 15 horizontal lines. A large, semi-transparent watermark reading "SAMPLE" is centered across the lines.

Do not write below this line

This section for use by SECOND Examiner only

Marks:

Task	<input type="text" value="0"/>	<input type="text" value="1"/>	<input type="text" value="2"/>	<input type="text" value="3"/>	<input type="text" value="4"/>	<input type="text" value="5"/>
------	--------------------------------	--------------------------------	--------------------------------	--------------------------------	--------------------------------	--------------------------------

Language	<input type="text" value="0"/>	<input type="text" value="1"/>	<input type="text" value="2"/>	<input type="text" value="3"/>	<input type="text" value="4"/>	<input type="text" value="5"/>
----------	--------------------------------	--------------------------------	--------------------------------	--------------------------------	--------------------------------	--------------------------------

Examiner Number

<input type="text" value="0"/>	<input type="text" value="1"/>	<input type="text" value="2"/>	<input type="text" value="3"/>	<input type="text" value="4"/>	<input type="text" value="5"/>	<input type="text" value="6"/>	<input type="text" value="7"/>	<input type="text" value="8"/>	<input type="text" value="9"/>
<input type="text" value="0"/>	<input type="text" value="1"/>	<input type="text" value="2"/>	<input type="text" value="3"/>	<input type="text" value="4"/>	<input type="text" value="5"/>	<input type="text" value="6"/>	<input type="text" value="7"/>	<input type="text" value="8"/>	<input type="text" value="9"/>
<input type="text" value="0"/>	<input type="text" value="1"/>	<input type="text" value="2"/>	<input type="text" value="3"/>	<input type="text" value="4"/>	<input type="text" value="5"/>	<input type="text" value="6"/>	<input type="text" value="7"/>	<input type="text" value="8"/>	<input type="text" value="9"/>
<input type="text" value="0"/>	<input type="text" value="1"/>	<input type="text" value="2"/>	<input type="text" value="3"/>	<input type="text" value="4"/>	<input type="text" value="5"/>	<input type="text" value="6"/>	<input type="text" value="7"/>	<input type="text" value="8"/>	<input type="text" value="9"/>

OXFORD

UNIVERSITY PRESS

Great Clarendon Street, Oxford OX2 6DP

Oxford University Press is a department of the University of Oxford. It furthers the University's objective of excellence in research, scholarship, and education by publishing worldwide in

Oxford New York

Auckland Bangkok Buenos Aires Cape Town Chennai
Dar es Salaam Delhi Hong Kong Istanbul Karachi Kolkata
Kuala Lumpur Madrid Melbourne Mexico City Mumbai Nairobi
Sao Paulo Shanghai Singapore Taipei Tokyo Toronto

with an associated company in Berlin

Oxford and Oxford English are registered trade marks of
Oxford University Press in the UK and in certain other countries

© Oxford University Press 2002

The moral rights of the author have been asserted

Database right Oxford University Press (maker)

First published 2002

All rights reserved. No part of this publication may be reproduced, stored in a retrieval system, or transmitted, in any form or by any means, electronic, mechanical, photocopying, recording or otherwise, without the prior written permission of Oxford University Press, with the sole exception of photocopying carried out under the conditions described below

You must not circulate this book in any other binding or cover and you must impose this same condition on any acquirer

Photocopying

The Publisher grants permission for the photocopying of those pages marked 'photocopiable' according to the following conditions. Individual purchasers may make copies for their own use or for use by classes that they teach. School purchasers may make copies for use by staff and students, but this permission does not extend to additional schools or branches

Under no circumstances may any part of this book be photocopied for resale

ISBN 0 19 4379485

Printed and bound by Grafiasa S.A in Portugal

Any web sites referred to in this publication are in the public domain and their addresses are provided by Oxford University Press for information only. Oxford University Press disclaims any responsibility for the content

Pages 4–5 and 90–93 reproduced with kind permission of the University of Cambridge Local Examinations Syndicate

The authors and publisher are grateful to those who have given permission to reproduce the following extracts and adaptations of copyright material:

p17 Extract from Talk Now advertisement, *The Sunday Times Magazine* 1 July 2001. Reproduced by permission of Dream Direct.

p37 Extract from Cotswold Wildlife Park and Gardens brochure. Reproduced by permission of Cotswold Wildlife Park.

p57 Extract from P&O Portsmouth Spanish mini-cruises brochure. Reproduced by permission of P&O Portsmouth.

p66 Extract from The Jazz Club October-December 2001 brochure. Reproduced by permission of The Jazz Club.

Illustrations supplied by:

Kathy Baxendale pp 22, 23, 42, 43, 62, 63, 82, 83

Chris Paveley pp 12, 28, 32, 48, 52, 68, 72, 88

The publisher would like to thank the following for their kind permission to reproduce photographs:

Corbis p 29 (exam/B Colton); Robert Harding p 29 (power station); The Image Bank p 69 (teenagers/Elyse Lewin Studio Inc.); OUP database p 29 (classroom); Photonica Europe Ltd p 89 (woman/K Steele); Stone p 29 (bottles/P & K Smith); Telegraph Colour Library p 89 (couple/M Spann); Topham Picturepoint p 69 (model/Image Works).



New Headway English Course is a development of the highly successful multi-level *Headway* series. The course combines the best of traditional methods with more recent approaches to help students use English accurately and fluently, and provides a fully comprehensive language teaching series from beginner to advanced.

Headway PET Practice Tests have been designed for use alongside *New Headway Pre-Intermediate* or *New Headway Intermediate*. Exam tips provide the help and guidance students need to prepare for the Cambridge Preliminary English Test.

This book contains:

- A complete examination overview
- Examination tips and strategies
- Four complete practice tests

There is also a Teacher's Guide with teaching tips, and a cassette with the listening tests.

OXFORD
UNIVERSITY PRESS

www.oup.com/elt

